

GNT

Great Notley Times
54: Autumn 2022

Great Notley Parish Council Magazine





LITTLE NOTLEY'S PRESCHOOL

The Church in Great Notley
 phone : 07583 506054 or 01376 33950
 Email : littlenotley@btinternet.com
 Website: www.littlenotleyspreschool.co.uk

WHY CHOOSE US ?

We are passionate about children and giving them the best start in life and their journey to education. Our timetable of activities is creatively designed to each child's unique personal development needs. Being small and locally owned we encourage a sense of belonging within our community. Providing a safe and homely environment where your child can establish friendships that build their confidence through the shared discovery of new things. Our dedicated, qualified and experienced staff create a secure, safe and stimulating environment that encourages the children to play, explore and learn through exciting activities that children enjoy.

COME AND VISIT US

CALL NOW!



Learning through play
 Learning through play helps children gain social skills and thrive. We provide a range of stimulating activities enabling children to explore their physical and creative talents.

Now enrolling
 Little Notley's Preschool welcomes children from two to four years of age and can accept government funded places from the age of three.

Safe and stimulating
 A welcoming indoor and outdoor environment that motivates children to learn. Toys, books, equipment and facilities to keep children entertained and stimulated throughout the day.



Visit our website
 Visit www.littlenotleyspreschool.co.uk for more information

Serving the Great Notley community
 We invite you visit us. If you would like to make an appointment to come in please give us a call. We have an open door policy so we encourage you to stop in at anytime for a visit.

We are at home in Great Notley



Thinking of buying, selling or renting?
 There is only one number you need

01376 341 141

www.hamiltonpiers.co.uk 7 The Square, Great Notley, CM77 7WT
 780 Associated Offices including Chelmsford and Park Lane, London W1



Great Notley TIMES

Edition	Input Deadline	Delivery
Summer	May 24th	End of June
Autumn	Sept 24th	End of Oct
Winter	Jan 24th	End of Feb

Edition 54: Autumn 2022

Contents

4 A Tribute to The Queen	22 Walk & Talk Men
5-6 News from the Chairman	24-25 WI
7-8 Essex Library Services	26 Crime Prevention
8 Christmas Event	27 DigiGo
8-10 Walking Group	28 Male Voice Choir
11 Remembrance Service	33-34 Photography Club
12 Notice of AGM	35 Braintree Street Market
13-14 White Court Dance	36 Notley Green Bowls Club
16 Tree Warden Vacancy	37 Table Tennis & Badminton
18 The Notley Sky at Night	38 Parish Councillors
19-20 Scouts	Back Cover: Parish Contacts

Uniting the Parish areas of: Cut Hedge - London Road -
Notley Green - Oaklands Manor - Panners Farm -
Slamseys Farm - White Court

Cover image - Taken by a member of the Photography Club

Local articles of interest, residents views and comments are always
welcome and should be sent to the Editor.
email: editor@greatnotley.org.uk

Great Notley TIMES

Whilst Great Notley Times is supported by the Great Notley Parish Council, the views expressed within it are not necessarily those of the Council





Great Notley Parish Council offers its condolences upon the death of Her Majesty the Queen and the Parish Council Chairman offers the following thoughts

Great Notley Parish Council is greatly saddened by the passing our late Sovereign, her majesty Queen Elizabeth the Second. Our sorrow at this time is shared by people across the globe, as we remember with affection and gratitude the lifetime of service given by our longest serving Monarch. That service was an inspiration to many and an example to us all.



As I wrote my report in April, I thought that life had at last got back to normal and was in no way ready for everything that has happened since. We had not expected the huge rise in the cost of living nor the thoughts of a cold winter as energy bills began to rise. But now the world has been shocked and saddened by the sudden death of our Queen, Elizabeth 11. A lot for us to deal with!

I am writing this during the period of mourning before the Queen's funeral whilst watching from time-to-time King Charles 111 progress around the United Kingdom and hope that by the time you read this, things will have settled down and that we all feel confident enough to look ahead with optimism.

On a happier note, I must say how pleasing it was to see so many people enjoying the annual fete which was also part of our Jubilee celebrations. It was a glorious day, and everyone was in a party spirit enjoying the sun and all the activities. The Community Association did a wonderful job.

In June I was pleased to attend the levelling up meeting hosted by Braintree District Council which raised a number of Health and Well-being issues including social isolation, transport, and obesity. I also attended the Community 360 roadshow which came to the Parish and was surprised to find how many volunteer groups there are offering help of all sorts to the community. Do look into it if you have a problem and contact information can be found on the Parish Council website or on the Community 360 website

<https://www.community360.org.uk/>

On the topic of transport, I must say how useful I have found the Digi-go buses which cover our area. I can now book a bus to visit my family in the Felsted area and be brought back almost door to door. I urge you to read about it and give it a try.

The work of the Parish Council goes on as usual and we are planning for Remembrance Day and Christmas and you will be able to read of our plans in this issue.

We have various ongoing items, such as the allotments, which are moving on slowly. We await Councillor Butland's attempt to have

Essex review their refusal to grant a 20-mph limit in White Court and our request for a reduction of the speed limit on the 131 as it passes our village in view of changes such as the Horizon 120 development. We have also asked them to consider tactile paving at the crossing, to the footpath, on Bridge End lane.

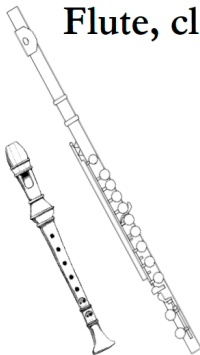
I must take the opportunity to thank those of you who responded to requests for information on potholes. It was a great help, and the work is planned shortly. We have a beautiful village and it is helpful if residents are able to highlight issues and you may find the quickest and easiest way to do this is by using the 'report it' tab on the website <https://greatnotley.org.uk/report-it/>

The flooding of the underpass to the Discovery Centre remains an issue despite attempt to correct it but is not being ignored. We also rely on residents to take care what they feed the ducks at Panners pond because of problems with rats and to consider others when they park, particularly with a view to emergency vehicle access.

As we move into Autumn and then Winter, we must remember how we enjoyed the long hot days of Summer this year but be grateful each new season brings its own special features and enjoy the changes as we walk through our lovely village.

Dorothy Griffin
Chairman of Great Notley Parish Council

Flute, clarinet, saxophone and recorder tuition



All ages and abilities
Individual lessons
Experienced professional tutor
DBS checked

Richard Catchpole BA Hons. (Music)
07985 979627
rcatchpole@postmaster.co.uk



**Update**

Recycling at your local library

Here's a tip about disposing of your empty ink cartridges in an eco-friendly way. Take them to your local library.

Every library has a new Ink Bin recycling box to put your empty home-use ink cartridges in. Once they're collected, they'll be sorted, refilled and put back on the market as remanufactured ink cartridges. This will stop them ending up in landfill.

What else does your local library recycle? Most will take old batteries; some take small electrical items too. Save yourself a trip to the recycling centre!

If you're running short of recycling sacks or caddies for roadside collections, your local library may be the place to help. Food sacks, garden sacks and recycling boxes can all be found at some of our libraries.

Coverage does vary, so check out the [recycling facilities available at your local library](#).

Book groups and Essex Library Service

Are you keen to share your thoughts about a book you've read? Can't wait to find out what others thought of it, too? Starting a book group is a great way to stay in touch regularly with book lovers and to make new friends.

[Essex Library Service helps book groups](#) in many ways. By registering your group with us you can reserve multiple copies of your chosen book which can be borrowed for up to three months, and you chose to be added to the list of book groups which can be shared with other interested readers. Our website can give your group ideas for what to read.

A library card for every child!

Essex Library Service wants every child to experience the joy of reading. That's why we're giving every pupil in Essex a library card as

part of our Essex Year of Reading campaign.

By now, most pupils will have received their library card and a campaign bookmark from their school. All you need to do is take it to any Essex library to activate it and start borrowing. As well as access to thousands of books, Essex Libraries also offer e-books, e-audio and e-comics.

If you haven't had the card, don't worry. Just go into your local library and ask to join. (You'll need ID such as a driving licence, bank statement or recent utility bill.) It's free, it's quick and it's easy.

More about Essex Year of Reading at essex.gov.uk/news/essex-year-of-reading.

Great Notley TIMES

Christmas Event



Save The Date

On Saturday 17th December the Notley Green Community Association will again be hosting a Christmas pantomime at the Community Centre and afterwards the Parish Council will be hosting a 'carols around the Christmas tree' singalong event with refreshments afterwards.

More information will be available on the Website and Facebook pages nearer to the time but in the meantime please save the date!



**Update**

As walkers, we always hope for dry weather, so in that respect the summer of 2022 has been great. However, we found ourselves having to cancel two walks and shorten a few others because it was just too hot! Often, though, conditions were just right and we were able to get out into the countryside, beyond our usual routes.



A good number of us (pictured above) visited Sudbury Meadows in June, covering either 3 or 5 miles and enjoying an excellent lunch afterwards. As you can see below, our walks took us both under and over several bridges, and past some lovely houses.



We hope to fit in another similar outing before you read this edition of GNT. Several new walkers have joined us recently, and a few have



returned after gaps of up to two years, proving once again that “There’s no such thing as an ex-walker, merely a lapsed walker”! We are also looking forward to our first post-COVID Xmas Dinner. The group meets 3 times a week, with options to suit all walkers and a chat over coffee afterwards:



Mondays: Gt. Notley, starting from Panners Coffee Bar at 10:30 am
Wednesdays: Braintree, starting from Marks Farm Tesco car park at 10:30 am

Saturdays: Witham, starting from Morrison’s car park at 10:00 am

So, if you’d like to come along and ’try us out’:

Email angela@angelagakis.com or

Phone 07799 068408

**All residents are invited to the
Service of Remembrance
Sunday 13th November 2021 at
12 Noon**



At the going down of the sun and in the morning we will remember them

Please note that to accommodate the numbers of people who now attend this event it will be taking place on the green behind the Community Centre this year and not at the White Court Memorial

Food and drink to be served afterwards in the Community Centre



NOTLEY GREEN COMMUNITY ASSOCIATION

Registered Charity No 1058443

Notice of AGM

To be held on

Monday

7th November 2022

At 19:45

In The Committee Room

The meeting is open to all and this year we will be agreeing minor amendments to our Constitution

Thank you 😊

Community Centre, Notley Green, Great Notley, BRAINTREE, Essex CM77 7US
01376 348449 www.ngca.org.uk email nicky@ngca.org.uk

C:\Users\NGCA\Office\Dropbox\Current File\Committee Meetings\AGM\Notice of AGM_2022.doc



5 6 7 8...

What a fantastic summer we all had. We danced at several fetes in the lovely sunshine. I am sure many of you came and saw our displays and agree the children danced their socks off.

It was also a brilliant exam session in ballet and freestyle. Everyone did well and we have just had the presentation of the awards. Distinction and the highest mark was given to Emily Ellis in ballet with Gracie Card, Lola Humphries-Surry and Hollie Wood gaining the highest in Freestyle.

I must also mention Mia Phillips, Isabella Laithwaite and Ellie Barwick who took their Intermediate ballet and all passed with Merit. This exam is equivalent to A. levels or 14 UCAS points and takes at least two years study. Poor Fae Cassidy was also due to take it but contracted COVID the day before the exam and was too poorly to dance. She has now gone to university, but we hope she will be able to do it in the future.

The Autumn Term has started well, with lots of fun and giggles as well as some lovely technique.



As most pupils have “gone up” we have had to produce a new timetable on a Tuesday to accommodate everyone. The little ones start at 3.45pm now and we will be pleased to welcome any new dancers from 3 years old.

Congratulations to Miss Aimee and her new baby Jude a lovely brother to Rex. It has been great to see everyone back to enjoy dancing classes again. Saturday mornings are at White Court School and Tuesdays at Notley Green Community Centre. Contact Miss Margaret on white-courtdance@hotmail.co.uk or follow us on facebook for more information.



Are you looking to make changes
to improve your social, physical
and mental wellbeing?



Live Well Link Well is free and confidential support
of a non-medical nature. We can help you with:

- Healthy living
- Quitting smoking
- Physical and mental wellbeing
- Independent living
- Mobility and equipment
- Home adaptations
- Safety and security
- Looking after someone
- Social Inclusion
- Getting out and about
- Money worries



How do I access the support?

If you are aged over 18 and live in Essex

T: 0300 303 9988

(Monday to Friday from 8am – 7pm)

E: livewell.linkwell@nhs.net



ESSEX MOTORCYCLE BUYERS

We buy all Motorcycles, Mopeds
Scooters, British Motorcycles,
Barn Finds or Parts

LOOK IN YOUR SHEDS, GARAGES, GARDENS

Boxes of Parts Wanted

Call Darren : 07775 998628



HENRY

Your Local Tree Surgeon

Conifer Hedge Specialists

Trees / Hedges
Trimming, Topping
Pruning Service
Tree Crowning
Tree Reduction
Dead Wooding
Tree Felling

Wood Chipper Service

Tree Testing
Stump Grinding
Stump Removal
Trees Removed
Storm Damage
Waste Removed



Mobile : 07470 227144

Home : 01376 326163

FREE ESTIMATES

Great Notley TIMES

GP Update



Update

GP surgery Patient Participation Group

The Great Notley surgery wishes to let you know about its Patient Participation Group.

The aim of the group is to work with their practice to provide practical support, to help patients take more responsibility for their own health and to provide strategic input and advice. PPGs are based on cooperation between the practice staff and patients.

In particular the Group issues a regular newsletter which contains lots of useful information about the practice and managing your health and the group would particularly like patients to know how to obtain a copy.

You can download a copy at www.littlewalthamsurgery.co.uk/patient-participation-group and click on 'newsletter' on the left-hand side of the screen.

**Tree Enthusiast Required!**

After many years of assisting the community the current Parish Council tree warden at Great Notley is stepping down. Great Notley Parish Council is therefore seeking a new volunteer tree warden.

Tree Wardens do not need to be tree experts but tree enthusiasts! The Tree Council will provide a handbook and resources to assist you and training events are also organised by the local tree network co-ordinator at Braintree District Council. In addition, the retiring warden would be happy to have a chat with you by way of 'handover'.

A more detailed leaflet can be obtained on the Parish Council website below or by contacting the Clerk.

<https://greatnotley.org.uk/become-the-new-parish-council-tree-warden/>

You will see that the role can be as varied as you wish but Great Notley Parish Council is specifically looking for a person to carry out the following -

- Take a look at any trees subject to a Tree Preservation Order where the owner has applied for planning permission to carry out works to the tree - the Clerk would advise you of the details and you would just need to take a look at the paperwork and tree and report back to her. There are usually around ten to fifteen applications per year.
- Become involved in the emerging Community Orchard project to plant trees in an area at Panner's Field for the benefit of the Community.
- Assist in the maintenance of a handful of trees owned by the Parish Council and monitor their welfare.

• If you are interested in this volunteer role please contact the Parish Clerk at greatnotleyclerk@gmail.com or by phone 01376 331251

THE CHURCH IN GREAT NOTLEY NEEDS YOU!

Join our team today
and become a volunteer!

**WE APPRECIATE EVERY HELPING
HAND WE CAN GET!**

We need volunteers to help
out...

IN THE GARDEN

IN THE OFFICE,

ON THE SOUND DESK

AND PLAYING THE PIANO ON

SUNDAY MORNINGS.

If you are able to help,
please email Lisa on
treasurer.greatnotleychurch@gmail.com
or pop down to the church when we're
open!



Finding your way: October-December sky guideposts

Look first to the south and west. There you will see the three bright stars of the Summer Triangle slowly setting. Altair is to the south; the brilliant blue one further north, nearest the horizon, is Vega; and a bit higher overhead is Deneb. Deneb is at the top of a collection of stars in the form of a cross, standing almost upright between Vega and Altair during this time of the year.

High overhead are the four stars of the Great Square. Although they are not particularly brilliant, they stand out because they are brighter than any other stars near them. The square is lined up so that its sides are aligned north-south and east-west.

South of the Square, the skies are nearly barren of stars. There is one very bright star, called Fomalhaut (pronounced something like "foam a lot"), low to the south. If you see any other bright object to its north, it is probably a planet.

North of the Great Square, you'll see the five main stars of Cassiopeia making a bright "W" shape (or an "M" depending on your point of view). It will be visible even as far south as Brazil.

A string of second-magnitude stars runs from the northeast corner of the Great Square in a line south of Cassiopeia; that's the constellation of Andromeda.

The Milky Way runs through Cassiopeia and continues across the northern horizon. It's nice just to scan your telescope through Cassiopeia and Perseus at random, not looking for any object in particular.

To the east, you'll see the "winter" stars begin to make their appearance. Look for a little cluster of stars called the Pleiades otherwise known as the Seven Sisters.

East and south of the Pleiades is the reddish star Aldebaran; north of the Pleiades, the brilliant star Capella rises. It is a magnitude-zero star, a match for Vega in the west.

Along the horizon, the bright stars of Orion, Betelgeuse and Rigel, and the Twins will be just rising. It is worth staying up a bit later in the evening if you can, and try to get an early look at some of the best of the Winter objects to be found there.

During this time of year, Ursa Major or the Plough can be hard to find even in northern climes because it lies right along the northern horizon during the evening. Any trees or buildings there, or even just haze in the sky, may obscure it from view until the wee hours of the morning.



Walking Group Update

Scout and About



Scouts



1st Great Notley Scout Group

Find us at:

<https://www.facebook.com/GtNotleyScouts>



At camps and sleepovers, building dens, hiking and so much more! In June our Beavers, Cubs and Scouts all went to exciting camps with other groups around Essex!



In October the Group camp includes all three of our sections, climbing, archery, kayaking and much, much more.

Our Schedule:

Great Notley

Wednesday:

Beavers 5.30 – 6.45pm

Cubs 6.30 – 8pm

Scouts 7.30 – 9.15pm

Great Leighs

Monday:

Beavers 5.30 – 6.45pm

Scouts 7.00 – 8.30pm

Tuesday:

Cubs 6.30 – 8pm

We are working on our poppies and readings for Remembrance on Sunday 13 November – see you on the green.

In December our Scout Group turns 21 years old! There will be celebrations... so watch this space (and also our Group Facebook page)!

Whilst we do operate a waiting list for our Group, we do have a few spaces, so get in touch!

A number of new leaders have joined us in the last few months - more help means more fun for the leaders as well as for the young people! If you fancy joining the fun, please get in contact with our Group Scout Leader, Ann Quartermain at ann.quartermain@greatnotleyscouts.org

**Calling all
tea makers,
tidy-uppers,
activity
planners
and helpers
for as little
or as much time
as you can
spare.**

scouts.org.uk/volunteer
#SkillsForLife

© Copyright 2019 Scout Association of Great Britain. All Rights Reserved.



**1st Great Notley Scout
Group**



Advertising

Advertising in the Great Notley Times

The Great Notley Times is delivered to approximately 3142 homes within the Parish of Great Notley. It is published by the Parish Council three times a year. The Parish Council are pleased to support local businesses by providing advertising space in this magazine.

Advertising rates are on a four editions basis so that your advert will appear in four consecutive issues. The rates are as follows –

Black and White Adverts

One eighth page £40

One Quarter page £80

One half page £160

Please note that the rates for the black and white adverts only guarantees an advert within each magazine and does not guarantee a specific space as the setup of the magazine is dictated by editorial content.

A limited number of full colour adverts can also be accommodated on the inside of the front or back covers at the following annual rates Half Page £200 and One Quarter page £100

To advertise in this magazine please contact the editor by email editor@greatnotley.org.uk where you will be sent a booking form to return to the same email address, you can also email your artwork to this address once your advert has been approved.



Men's Mental Health

We are a men's mental health and community support group that offers regular free walk events in both Braintree and Witham (but also all across the UK) in open outdoor green spaces. What we are is a safe, supportive and inclusive space for all men or those who identify as men to come along, get some gentle exercise and fresh air, and talk about whatever's on their mind, or just to be a pair of listening ears to someone who might need it. Our main mission is to stop men feeling less isolated and feeling like they have to struggle in silence with how they might be feeling mentally, and we particularly want to help be part of the solution in bringing down the alarming statistics currently surrounding men's mental health and suicide rates amongst men in the UK.

Our next Braintree walk is in the diary for Sunday 23rd October at 11am, which will be starting from Braintree Railway Station, taking in a 2-3k walk along the Flitch Way up to the Booking Hall Cafe at Rayne (where we'll pause for refreshments) before returning back to Braintree. New walk events in Braintree will almost always be the last Sunday of the month, and will be advertised on our website and social media channels. More info is here on our website for the October walk (<http://www.walkandtalk4men.com/blog/new-walk-event-flitch-way-braintree-23rd-oct>), and I've also attached a copy of our fact sheet for you which goes into a bit more detail about our history, together with a copy of our logo and some shots of our previous walk events.

Alex MacGregor
Content Writer and Producer
Walk Leader / Web, Content and Social Media Executive,
Walk&Talk4Men
Volunteer Fundraiser, Marie Curie UK



Are you looking to make changes
to improve your social, physical
and mental wellbeing?



Live Well Link Well is free and confidential support
of a non-medical nature. We can help you with:

- Healthy living
- Quitting smoking
- Physical and mental wellbeing
- Independent living
- Mobility and equipment
- Home adaptations
- Safety and security
- Looking after someone
- Social Inclusion
- Getting out and about
- Money worries



How do I access the support?

If you are aged over 18 and live in Essex

T: 0300 303 9988

(Monday to Friday from 8am – 7pm)

E: livewell.linkwell@nhs.net

**Notley Green****WOMEN'S INSTITUTE NOTLEY GREEN**

Over the last few months our members have enjoyed, seen and tried out some new skills and been inspired.



Our March meeting was a relaxing one as we had a local Yoga instructor. Members participated, with giggles along the way and some very strange positions but we all went home feeling much calmer and less stressed. We had also asked members to bring along donations of sanitary and hygiene products to send off to the Ukraine appeal. One member had spent time making a cute baby's outfit and teddy bear.

Whereas April was a creative meeting with a local artist demonstrating and painting from a blank canvas a beautiful landscape in the style of Bob Ross. Members were inspired and mesmerised as they watched this beautiful painting being created. By the end of the meeting there were several of us thinking they might take up painting! The painting was then raffled off to Members at our May meeting.



Previously In January, we had had a talk from one of the volunteers from the Gardens of Easton Lodge which inspired members of the Gardening Group, a small number of us decided to go on the Helen Rollason Charity Walk in April. Of course in true WI style – a

cream tea was involved. In June, we participated at the Great Notley Fete with our traditional Pimms and Cream Tea Tent for the Jubilee celebrations. Again our Decorating committee put in lots of planning to decorate our village sign post for this special occasion, We had a competition where our members were asked to decorate a Jubilee cake. We also had fun with a Beetle drive evening in July and a crafting evening in August to make a padded notice board.



To pay our respects to our Queen, who had been a Member of the WI, we held a minute of silence at our September meeting. To follow, one of our members, gave a talk about her role in Scouting, of which the Queen had been Patron. This followed with some puzzling activities.

WINGS is very active with Remembrance Day, so once again we will be making poppies to decorate the Village sign and the Green ready for the Remembrance Service. Please contact us or check out our facebook page for details.

For those of you who think you may wish to join or be involved in our Group we meet at approximately 7.45pm at the Great Notley Community Association Hall every third Thursday of the month. We have a speaker or activity and have some social time to chat with old friends and make new ones. If you wish to know more or want to be part of our inspirational and active group of Ladies in Great Notley then please contact us for further information by email: joino-urwi@gmail.com or visit us on our Facebook page : <https://www.facebook.com/womensinstitutenotleygreen/>



**Drk Nights**Darker nights make your home look like you are in

With many of us now working from home it is easy for to forget about our home security, what would have been routinely thought of before we left for work can easily be forgotten. Autumn brings darker nights, whether working from home, going out to work or just popping out for “a moment” later in the afternoon ensure that either lights in the house are left on or are operated by a timer to come on when it gets dark. **A home in darkness looks unoccupied and becomes an attraction to the burglar.** After dark have energy efficient lights on in rooms that replicate what your home looks like when you are in.

As well as making sure your home and garden are secure when you leave don't forget outside lighting (activated by a “dusk till dawn sensor” is best to the front of the house) may deter thieves. There are also TV simulators such as “Fake TV” that produces lighting that resembles a television switched on within a room. Other products available to make it appear that you are home are a movement sensor that activates an appliance plugged into a plug socket and doorbells that you can answer remotely after viewing the caller; an internet search will find these and other security products.

If you would like further advice regarding security please look at the Essex Police website www.essex.police.uk/cp/crime-prevention/ and <https://www.securedbydesign.com/> .

Naturally we also ask locals to report any unusual activity to police; in an emergency on 999 or after the event on 101 or “Do it online” www.essex.police.uk/do-it-online/report-a-crime/ or to Crimestoppers anonymously on 0800 555 111.

SAS130922



On Demand Electric bus service

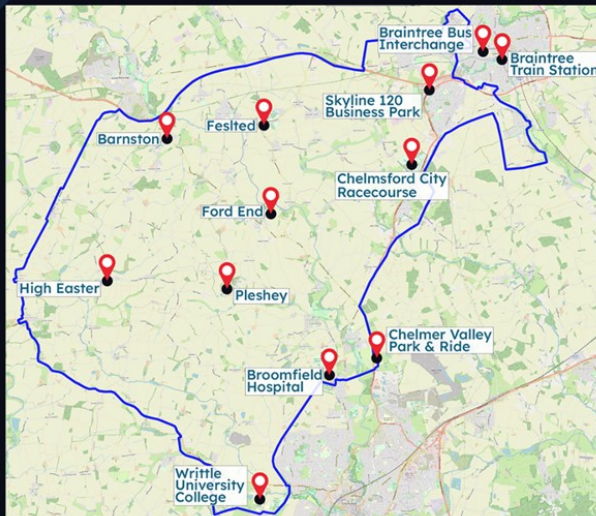
DigiGo has merged its two travel zones into one! This adjustment to the service allows passengers to travel flexibly within one boundary. This means that anyone within the new boundary can reach the following locations without worrying about crossing over into a different travel zone:

- Broomfield Hospital
- Braintree Town Centre – Train Station and Bus Interchange
- Chelmsford City Racecourse
- Great Notley Country Park
- Chelmer Valley Park & Ride
- Many local village pubs, restaurants and cafes
- Various places of worship and community clubs!

The best way to book DigiGo is via the TravelEssex app but selecting where you want to go. You can book on-demand (approximately 15-20 minutes time) or up to 7 days in advance!

To stay updated you can 'like' @DigiGoUK on Facebook, or visit www.digigo.uk for more information

New Travel Zone!





Do Ray Mi

Braintree Male Voice Choir

Are you male? Do you enjoy singing?

Why not join the Braintree Male Voice Choir?

Singing is good for you (doctors have proved that) and singing together even better (psychologists have shown that).

The choir sing a variety of songs from classics such as Nessun Dorma and Morte Christe through Bring Him Home, Sweet Caroline, Ed Sheeran's Perfect and, recently added, the popular The Wellerman.

The next session starts the first Wednesday in September. Rehearsals are for two hours in Braintree on Wednesday evenings, at St Peter's Church Hall, St Peter's in the Fields, Braintree CM7 9AR at 7.30 pm.

Do I have to be able to read music? No

Do I have to have an audition? No

Will I have to sing alone? No.

So what's stopping you?

Contact choir secretary Ron Fosker on 01376 512582 or rfosker@btinternet.com for details, or go to the choir's website sites.google.com/site/thebraintreemalevoicechoir/home and fill in the contact form

White Court School



Nurturing every little acorn to become a mighty oak!

**Forest
School**

**Breakfast
and after
school club**

School open days

Call our school office to book a tour

01376331801

If you're looking for a nurturing, engaging and enriching start to your child's school journey then come and visit White Court School where the staff, parents and school community work together to achieve the best for each and every child.

Visit our website for a virtual tour...

www.whitecourtschool.co.uk/welcome

SLAMSEYS
DOG FIELD

SECURE & PRIVATE
GREAT NOTLEY
www.slamseys.uk

Open Daily
BOOK NOW

ALL ABOUT GARDENS

**Garden Maintenance
& Clearance**

**Tree Surgery
& Removal**

Hard Landscaping



Robert - 07879 003135

The Electrical Man

Clive Coleman

Your local electrician

Free estimates and advice

Reliable Quality work

Reasonable Prices

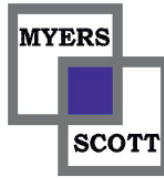
Any job welcome large or small, rewires,
fault finding, security lighting

NICEIC/Part P Registered

TEL. Clive : 07860 599427 or 01245360297

clivercoleman@aol.com

www.myersscott.co.uk



Myers Scott Ltd

Tel: 01245 362197

Established 2004

Seamless 'walk-through' wireless network installers for homes and business.

Technology support.
Networks, PC and Laptop repairs and servicing for homes and business.
Microsoft and Apple systems supported.

Portable Appliance Testing for business

Website design, build and maintain services.
Wordpress specialists.



BRAINTREE'S No. 1 MARTIAL ARTS CENTRE

**Build confidence, Improve Fitness,
Gain Self-Discipline, Increase Focus, Learn
Self-Defence & Improve Concentration!**



**KARATE
KICKBOXING
KRAV MAGA
ROYCE GRACIE JIU JITSU**



**No annual contracts
First lesson FREE!**

**Top quality instruction using
modern coaching methods
based on traditional
principles**

The Martial Arts Centre,
Unit 5 Springwood Court,
Springwood Ind Estate,
Braintree, CM7 2GB

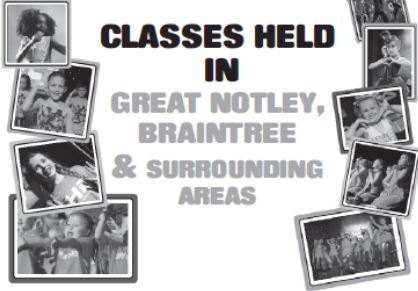
WWW.THEMARTIALARTSCENTRE.COM
reception@themartialartscentre.com
Tel : 01376 529122 Mob : 07967 490968

DANCE • ACT • SING

★
Rascals
Theatre School

Est. 1997

**CLASSES HELD
IN
GREAT NOTLEY,
BRAINTREE
& SURROUNDING
AREAS**



For more details tel: 01376 331543

Email: admin@rascals-uk.com

Website: www.rascals-uk.com

 www.facebook.com/RascalsTheatreSchool



**Little Acorns Nursery at
White Court School**

The Nursery at White Court School aims to provide a safe, secure and caring environment for children aged 3-4 years.

Morning session – 8:45 a.m. to 11:30 a.m.
Afternoon session – 12:45 p.m. to 3:15 p.m.

Full days are available, with a small charge for lunchtime supervision.

Register now for September 2022 intake!

Registration forms can be obtained from the school website:-
www.whitecourtschool.co.uk
(under information on the Nursery page)

For more information please call the school office:
Tel: 01376 331801
OR

Email: EYadmin@whitecourt.essex.sch.uk

D. Want Plumbing

Great Notley 01376 348404

Mobile 07786 165643

Great Leighs 01245 633994

david@dwantplumbing.com www.dwantplumbing.com

**All aspects of plumbing, heating and maintenance.
Supplying a local, friendly and reliable service for over 20 years.**

- 6 month guarantee / 10% discount to new customers
- Bathroom and wet room installation specialists
- Leaks, dripping taps, repairs, showers and fault finding
- Kitchens
- Supplying and fitting tapworks water softeners
- Registered Aqualisa Installer
- Radiators and towel radiators
- And more.....



Chartered Institute of
Plumbing and Heating
Engineering

City & Guilds



**Find us on
Facebook**

>>> Could YOU be a Blood Runner? <<<



↓ See our article ↓

EssexVoluntaryBloodService.com




Paul
Clark Printing
LIMITED

Make a better impression

- Leaflets • Posters • Menus • Price Lists • Booklets
- Labels • Business Stationery • Business Cards
- Greetings Cards • Raffle Tickets • Invoices
- NCR Sets, Pads, Books • Plans



sales@paulclarkprint.co.uk
www.paulclarkprint.co.uk
01787 469628



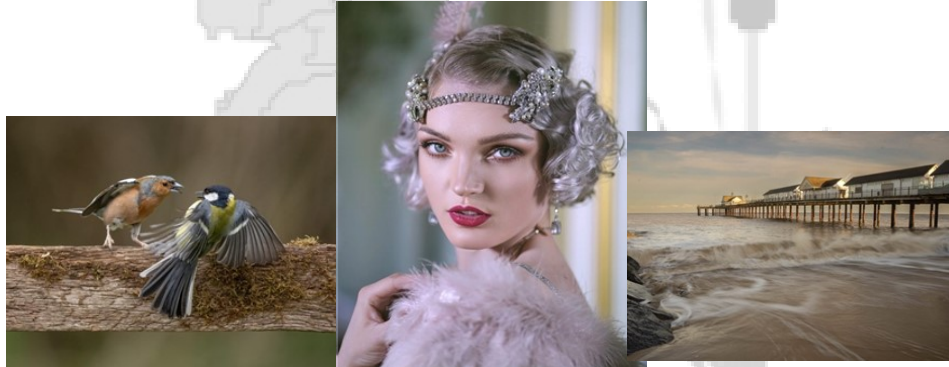


Great Notley Photography Club

Now that life is getting back to somewhere near normal after the past few years, Great Notley Photography Club are again meeting in person at The Church, Great Notley on alternate Thursdays 7.45pm – 9.45pm. Over the past year we have held competitions, speakers (both in the hall and via Zoom) together with creative evenings, social evenings and photo walks.

We held our annual AGM at the end of June where presentations were made for achievement through the 2021/22 season. The overall DPI (digital image) winner was Trevor Partridge, who beat Lisa Greenwood by just half a point. One of Trevor's images (Great Tit & Chaffinch Argument) below. The Print competition was also a close run thing with Lisa Greenwood winning the colour section and overall, with the Black and White section being a tie with Lisa and Leigh Garner scoring equal points.

The photo of the year was one of Lisa's entitled Katie (below), and the most improved photographer was Andrea Stanley. One of Andrea's images 'Beneath the Pier' is also below.




Our first meeting of the 2022/23 season was a social members/new members evening. The evening was a mixture of showing some of the club members' photos (both digital and printed), explaining the forthcoming programme and a fun photography based quiz.

Our second meeting of the season members showed 3 of the favourite photos, these were not necessarily the best technical photos but ones that meant something to the author.

Great Notley Photography Club is a friendly club and we pride ourselves on the variety of programme including workshops, competitions, external and club speakers, photography outings etc. Our approach has always been to encourage members to get out and use their cameras from the simplest mobile phone to the most complex DSLR. As they say, the best camera is the one that you have with you - better to get the shot than no shot at all.

The club welcomes new members of all standards and all we ask is that you are keen to learn, share and develop your skills in photography. We would be pleased to see new/prospective members at our meetings.

If you are interested in coming along, we hold meetings on alternate Thursdays at The Church, Great Notley. Details can be found on our website www.gnpc.co.uk or email gnpc.photo@gmail.com for details.



join us

Great Notley Photography Club

Whatever your choice ?
we are the local club for you

facebook @greatnotleypc www.gnpc.co.uk



Market Dates

Braintree District Council:

We would like to invite members of the Notley community to our ever popular Braintree Street Market.

Held on the last Saturday of the month, the market brings together artisan producers, talented crafts people and fresh street food.

The street market runs alongside our traditional market and the stalls complement our range of unique high street stores.

We have a range of stalls at each market, and each event is a difference experience as the traders joining us vary.

The dates for the remainder of the season are:

Saturday, 29 October

Plus we have special Christmas events on Saturday, 18 November and Saturday, 3 and 10 December.



01787 383103

07956 665272 / 07506 614193



FAMILY RUN COMPANY WITH 40 YEARS EXPERIENCE

**DOMESTIC &
COMMERCIAL
DRAINAGE**

SERVICES INCLUDE

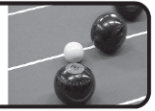
- SEWAGE TREATMENT PLANTS & SEPTIC TANKS
- 24 HOUR EMERGENCY SERVICE
- BLOCKAGE CLEARANCE
- CCTV SURVEYS
- DRAINAGE EXCAVATIONS
- DRAIN DESCALING & ROOT REMOVAL
- WATER MAIN REPAIR & INSTALLATION



www.ashenviro ltd.co.uk



ashenviro ltd@gmail.com



Update

Can I start by saying what a terrific summer we have just endured albeit way too hot at times but thankfully it has now cooled down. The Great Notley Fete was blessed with a very fine day and as usual it was very well supported. We put down a mat for anyone to try their hand at carpet bowls and it was well supported by the general public giving all who tried a laugh along the way.

As I write this article, we are excited within the club as the Essex East Carpet Bowls League is about to re-start after far too long away with all the covid restrictions. We have our first game at home on the 29th September where we welcome our old friends from Feering to start us off on our much-anticipated league run. We do not have as many teams competing as we had pre covid but we are thankful that six teams have survived to carry on the campaign for the 2022/23 season. Good luck to all other teams when they get their season under way (well maybe not too much luck against us!)

We have our AGM scheduled for Thursday 13th October following the afternoon session. Also following the success of the social evening last year, we have another one scheduled for Saturday the 3rd of December. The format is that we have a quiz running throughout the evening with questions set by our secretary Tony Day followed by chicken and chips or fish and chips. We will also have wine/beer as well as non-alcoholic beverages. This proved a big success last year as everyone joined into the spirit of the evening with a lot of laughs along the way.

Can I end as I always do by saying if you feel like giving carpet bowls a try, please come along to one of our sessions which take place on Monday/Thursday Afternoons from 1.15pm until around 3.30pm. You will be made very welcome and you do not need to bring anything as all is provided and we will even throw in a cup of tea and biscuits at half time. We look forward to seeing you.

Best wishes
Ray Hall
Notley Green Carpet Bowls Club.

**Update**

The Great Notley Table Tennis club is a fun club that meets every Thursday morning at the Community Centre Hall between 10am and 1pm. The three hour session gives flexibility so that members are not expected to stay the whole three hours unless they wish to.

We have 5 tables in use so there is never too much sitting around waiting for a game. We are a very sociable and friendly club and we welcome new players.

Our members have various levels of ability so if you would like to come along and have a couple of free taster sessions or would like any other information please call club secretary Pauline Davis on 0752 7079112

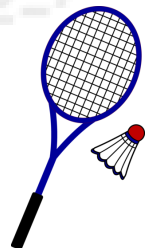
Many thanks
Pauline Davis
Secretary GNTTC

**Update**

If you enjoy social badminton then please call in any Tuesday between 1.30pm and 3.30pm at the Notley Green Community Hall and join us for a FREE taster session. There is a small session fee on subsequent occasions.

It doesn't matter what standard you are or whether you have never played before. We are a friendly bunch, so just drop in and give it a try. We can supply a racquet, but please wear trainers with non-marking soles.

Contact Keith on 01376 327687 or just turn up!





Organisation	Contact	Contact Details
Art Club	Isobel Chaudry	01376552376
Badminton	Keith Hind	01376 327687
Carpet bowls	Ray Hall	01376 749580
White Court Dance club	Margaret Cave	07809 042964
Church in Great Notley		01376 330988
Women's Institute	Linda Pickers	07713 754414
NGCA		01376 348449
Photography club		gnpc@gmail.com
Slamseys	Ruth Wheaton	01245 361400
Scouts	Ann Quartermain	ann.quartermain@greatnotleyscouts.org
Table Tennis Club	Pauline Davis	01376 341501
Toddler Group	NGCA	01376 348449
Workout	Brendan Cassidy	thechair@ngca.org.uk
Gardening Club	Pauline Inskipp	01376 342165
Local History Group	Mike Bardell	topbard@yahoo.co.uk
Notley Yoga	Leigh Acteson-Rook	07723 321818
Feel Good Pilates	Karen Blackburn	07515 547683
GP Surgery		01376 341411
Ducklings Pre-School	Julie Cook	01376 340432
Little Notleys pre-school	Steph Long	01376 339590
Busy Bees nursery	Melissa Harrison	07723 321818
White Court Primary School	Candida Burrell	01376 331801
Notley Green Primary School		01376 343485
Brownies and Rainbows		www.girlguiding.org.uk/interested
Rascals	Diane Neave	01376 331543

T&N Kitchens & Bathrooms

Supplied and Fitted

Developments Ltd

Contact us on social media!   @tndevelopmentsltd

- Complete Design & Project Management -
- High Quality Finish -
- Family Run Business -
- Professional & Friendly Team -



www.tndevelopments.com 07979 322225 / 07876 202926

Choose *home*

Personalised, private care in your home.

We can help with:

- Personal care
- Medication and transport
- Household tasks
- Companionship



Call: **03330 135 438**

Email: info@eclcaresolutions.co.uk

Visit: eclcaresolutions.co.uk

ecl care
solutions 



Clerk: Suzanne Walker
Tel: 01376 331251
E-mail: greatnotleyclerk@gmail.com

Parish Councillors

Dorothy Griffin
(Chairman) 7 Thatcher's Way, Great Notley, CM77 7HB
cllrdgriffin@greatnotley.org.uk
01376 554990

Frankie RICCI
(Vice-Chairman) cllrfricci@greatnotley.org.uk
07850 264115

Graham Butland cllrgbutland@greatnotley.org.uk

Barry Crawford 10 Bridge End Lane, Great Notley
07966 550507
cllrb Crawford@greatnotley.org.uk

Tom Cunningham 07891 537669
Clrrtcunningham@greatnotley.org.uk

Tony Pritchard cllrtpritchard@greatnotley.org.uk

Graham Sheppard cllrgsheppard@greatnotley.org.uk

District Councillors

Graham BUTLAND, Frankie RICCI and Tom Cunningham - contact details above.

County Councillor

Graham BUTLAND graham.butland@essex.gov.uk

www.greatnotley.org.uk