

GNT

Great Notley Times
55: Spring 2023

Great Notley Parish Council Magazine





LITTLE NOTLEY'S PRESCHOOL

The Church in Great Notley
phone : 07583 506054 or 01376 33950
Email : littlenotley@btinternet.com
Website: www.littlenotleyspreschool.co.uk

WHY CHOOSE US ?

We are passionate about children and giving them the best start in life and their journey to education. Our timetable of activities is creatively designed to each child's unique personal development needs. Being small and locally owned we encourage a sense of belonging within our community. Providing a safe and homely environment where your child can establish friendships that build their confidence through the shared discovery of new things. Our dedicated, qualified and experienced staff create a secure, safe and stimulating environment that encourages the children to play, explore and learn through exciting activities that children enjoy.

COME AND VISIT US

CALL NOW!

Visit our website

Visit www.littlenotleyspreschool.co.uk for more information



Serving the Great Notley community

We invite you visit us. If you would like to make an appointment to come in please give us a call. We have an open door policy so we encourage you to stop in at anytime for a visit.



Learning through play

Learning through play helps children gain social skills and thrive. We provide a range of stimulating activities enabling children to explore their physical and creative talents.

Now enrolling

Little Notley's Preschool welcomes children from two to four years of age and can accept government funded places from the age of three.

Safe and stimulating

A welcoming indoor and outdoor environment that motivates children to learn. Toys, books, equipment and facilities to keep children entertained and stimulated throughout the day.



We are at home in Great Notley



Your Local Property Specialists

Thinking of buying, selling or renting? There is only one number you need

01376 341 141

www.hamiltonpiers.co.uk 7 The Square, Great Notley, CM77 7WT
780 Associated Offices including Chelmsford and Park Lane, London W1



Great Notley TIMES

Edition	Input Deadline	Delivery
Summer	May 24th	End of June
Autumn	Sept 24th	End of Oct
Winter	Jan 24th	End of Feb

Edition 55: Spring 2023

Contents

4-6 News from the Chairman
7 Identification to vote
8-9 County Councillor Report
10-11 Walking Group
14 White Court Dance
16 -17 District Councillors Report
19 Great Notley WI
20-21 Scout Group

23-25 Could You Be A Parish Councillor?
26-27 WINGS - WI Notley Green
28-29 Great Notley Church
37 Table Tennis & Badminton
38 Parish Councillors
BC: Parish Contacts

**Uniting the Parish areas of: Cut Hedge - London Road -
Notley Green - Oaklands Manor - Panners Farm -
Slamseys Farm - White Court**

Cover image - Taken by a member of the Great Notley Photography Club

**Local articles of interest, residents views and comments are always welcome and should be sent to the Editor.
email: editor@greatnotley.org.uk**

Great Notley TIMES

Whilst Great Notley Times is supported by the Great Notley Parish Council, the views expressed within it are not necessarily those of the Council





Chairman's report 2022/23

This year The Parish Council has managed to work successfully throughout the year and kept residents up-to-date through our Facebook group and on our website. The Magazine has been delivered mostly as usual, but there have been some problems in that Royal Mail has been unable to deliver to every address in our post code. We are aware of it now and have taken steps to make sure no one is left out. We have also directed people to the Patient Participation Newsletter published for the local doctors' surgery which is available online.

We held an engagement meeting at Tesco's in May in order to talk to residents who may not be able to join us at council meetings. We have also met residents at the event introducing us to the DigiGo travel on demand which has proved to be a valuable asset helping everyone to get around the area. Community 360 which is an independent charity aiming to improve people's quality of life have also visited Great Notley to explain the numerous resources which are available.

Our Litter Team work hard to keep the village looking so good and we have also engaged a specialist deep cleaning team for the areas in hedges and ditches which are hard to access. Braintree District Council have also cleared leaves on the pathways which has made walking a lot safer. Keeping our roads up to standard has employed the keen eye of local people who have reported potholes and helped in having them repaired. Thanks to Councillor Butland and our Clerk Suzanne Walker who have passed on the reports to the relevant authorities.

The issues raised most often by residents are the inconsiderate parking of cars and the noise from cars racing along the roads around the village. Both have also raised questions of safety and we are in constant contact with both the Police and the Parking Partnership. The Police need evidence and are urging local people to provide it whenever they can. Recently, an advert for a meeting of cars was advertised on local media and reported to the Police and the Parish. Following representations from the Parish Council via the local County Councillor to Braintree District Council and the local Police a dispersal order was put into place. The Parish Council will continue to lobby for the issue

to be effectively addressed.

Disappointingly, our request for a reduction in speed limit on the A131 has been refused, as was the request for a 20mph limit in White Court. The latter, at least, is being looked at again. We have also requested tactile paving on Bridge End Lane near the white gates.

The results of a survey of residents affected by parking at the end of Cuckoo Way and Wood Way was part of an application to the North Essex Parking Partnership for parking restrictions but, due to the lack of response, the NEPP will not be able to progress the application.

Noise from the racecourse has also been an issue and is being raised at the appropriate authority by our Councillors. Again, the Police say they need proof which means they need to be there with the appropriate equipment when it happens. The police have invited councillors to join a patrol of the village but it is yet to be arranged.

We are still trying to find a suitable site for an allotment and are meeting regularly with Braintree District Council. Our plea for a sign warning of people crossing by the Astronomer since the refusal, on the grounds of cost, of an actual crossing is awaiting consideration. So too is our plan for some areas of rewilding along the central footpath and the tree strategy along Notley Green.

Our Remembrance Sunday event went ahead as usual with refreshments donated by Tesco and provided by the Great Notley Community Association. Thanks must go to the Reverend Roman, Rachel our bugler, Great Notley WI, the Scouts and Brownies and pupils of Notley Green school.

After the Christmas pantomime, to which the Parish Council was pleased to give a grant, the Community Association stepped in to offer Carol Singing Around The Tree. As it is not feasible for the Parish Council, WINGs have offered to host this event next year having been a great help in decorating the tree and helping with the celebrations, alongside the Scouts. We are so very grateful for their continued support. The Christmas tree and the replacement memorial tree have been paid for by the Braintree Councillors' Fund. Grateful thanks are extended to them.

We have yet to find a new Councillor to replace a resignation several months ago and as a small council we have felt the loss this year. There is an election in May and we hope people may wish to stand to join the Parish Council. Information is available on the Parish Council website and also within the magazine.

The budget for the year 2023/24 can be found on the website and shows an increase in expenditure which is predominantly down to two reasons - the increase in staffing costs as a result of the increase in the legal minimum wage and the reduction in the payment to be received from Braintree District Council towards litter picking in the Parish. Of course, this will mean a small increase in the Parish precept.

Finally, I am pleased to say we have been successful in achieving Council Quality Award status. This is an award that only a few councils achieve and is, in no small way, an indicator of the diligent work of our clerk, Suzanne. Thanks must go to our Councillors too, and the litter team, for all their hard work this year.

Dorothy Griffin
Chairman of Great Notley Parish Council

>>> *Could YOU be a Blood Runner?* <<<



↓ *See our article* ↓

EssexVoluntaryBloodService.com



New requirements for Voter identification

On 4th May 2023 Local Government elections will be taking place. The Government has recently brought in a requirement that will take effect as from this election that to be able to vote individuals will need to provide photo ID. If you cannot provide the required ID then you will not be permitted to vote. Do make sure you have the relevant information when you go to the polling station so you do not lose your democratic right to vote!

What ID do I need?

The following forms of photo ID will be considered acceptable –

A passport issued by the UK, Channel Islands, Isle of Man, a British Overseas territory, an EEA state or Commonwealth Country.

A Driving licence issued by the UK, Channel Islands, Isle of Man or an EEA state

A blue badge

A national ID card issued by an EEA state

An older person's bus pass

A Disabled person's bus pass

An Oyster 60+ card

A biometric immigration document

An identity card bearing the proof of age standards scheme hologram

And MOD form 90 ID card

What if I do not have any of the above ID?

If you do not have any of the above forms of ID then you may apply for a **Voter Authority Certificate** and can use this link to do so

<https://www.gov.uk/apply-for-photo-id-voter-authority-certificate>

Please note the deadline to apply for the certificate is 25th April 2023.

I want to find out more

More information is available on the Braintree District Council website

<https://www.braintree.gov.uk/news/article/521/braintree-district-residents-need-photo-id-to-vote-at-elections-in-may>

or the Government website

<https://www.gov.uk/government/news/voter-identification-faqs>

**Graham Butland**

COUNTY COUNCILLOR GRAHAM BUTLAND
MEMBER FOR THREE FIELDS WITH GREAT
NOTLEY COUNTY DIVISION
ANNUAL REPORT

2022/23

I have pleasure in submitting my Annual Report to the residents of Great Notley and White Court on the work that Essex County Council (ECC) has carried out during the year.

In May 2021 I was appointed as the ECC Cabinet Member for Devolution, the Arts, Heritage & Culture. During 2022 we launched the Essex County Council Arts and Cultural fund to provide funding to help organisations and practitioners deliver a broad and exciting range of work and activity to engage with and bring residents together.

The arts, cultural and creative projects supported by the Essex County Council Arts and Cultural Fund, will contribute to the Levelling Up Essex Strategy and play an integral part in enabling the objectives of Essex County Council's wider objectives as set out in Everyone's Essex.

Of the 47 successful projects that received funding many are designed to support economic regeneration, help alleviate mental and physical health issues, and highlight the importance of climate change action to the county's residents.

ECC has published its budget for the 2023/24 financial year. In it, we have outlined how we propose to spend the £2bn we are responsible for. This includes investment in the key areas that will benefit all residents. It also includes how we will continue to look after the county's most vulnerable people.

We are putting an extra £68million into services next year. Amongst other areas, next year, we are planning to spend:

- £506million on adult social care - £58m more than last year
- £275million on major infrastructure projects, such as new

schools and road improvements

- £200million on achieving our net zero targets
- £7.5million to deliver 340 new mainstream school places ahead of next September

We will expand our roll out of new community supermarkets to help people with the cost of living. We will also continue to invest in highways and footway maintenance and repairs. Our support for businesses will continue through the Backing Essex Business programme. This will help to encourage business growth across the county.

While we are continuing to invest in key areas, council finances are under pressure across the country. Inflation, rises in energy prices and interest rates, as well as increased demand have added £74m more to our costs this year.

Balancing this with the need to limit the impact on household budgets, mean a proposed Council Tax increase of 3.5 per cent. This includes a 1.5 per cent council tax increase, plus a further 2 per cent ring-fenced to Adult Social Care. For an average Band D property household, the ECC element of Council Tax will increase by £49.05 next year, or 94p per week.

During the year I have dealt with a number of issues raised by local residents and the Great Notley Parish Council. These have included potholes, anti-social behaviour, car racing on the A131, street lighting and local pharmacy issues.

If you have a matter that you wish to raise please do not hesitate to contact me at cllr.graham.butland@essex.gov.uk



Update



WELLBEING

WALKS

Braintree

"The walking group with something for everyone"

Since the previous edition of GNT, which mentioned walks cancelled because of the heat, we have had to call off several walks because of the dangers of icy paths and pavements - that's the British weather for you!



However, in between these two extremes, we have enjoyed a lot of great walking weather. Even when rain has been forecast, we have often set off hopefully and got away with no more than light drizzle.

Our Christmas dinner at Weaver's Restaurant, attended by over 40 walkers and partners, was a great success., especially the Strawberry Pavlova!


In December we received some really good news - a Community Grant from Braintree District Council, which has enabled us to ensure that all our Walk Leaders have up to date first aid training and the kits with which to apply it (although we hope we don't need to use them too often!) - see below.

The group meets 3 times a week, with options to suit all walkers and a chat over tea/coffee afterwards:



Mondays: Gt. Notley, starting from Panners Coffee Bar at 10:30 am
Wednesdays: Braintree, starting from Marks Farm Tesco car park at 10:30 am
Saturdays: Witham, starting from Morrison's car park at 10:00 am

Several new members have joined us since the start of 2023. You're always welcome to come along and 'try us out'. For further details:
Email angela@angelagakis.com or Phone 07799 068408

Great Notley **TIMES** Notley Green Primary School 



Learning all around us

At Notley Green, we believe that our environment has a significant impact on how we learn. From how it supports our thinking to how it makes us feel. We are delighted to share with you some photos of our learning displays that celebrate high quality learning and enable us to become immersed in our work.

What do you think?





You're invited to a
**Rural Crime
Open Day**

March 10th 2023 at Layer Marney Tower

1:00 PM until 3:00 PM

**Visit stalls and hear from operational police officers
around the work they carry out in rural communities**

Scan the QR code or head to our website for more
information: <https://www.essex.pfcc.police.uk/>





Save The Date!!

Saturday 15th July 1pm-9pm

Location – Village Green & Community Centre

- Inflatables and Fairground Rides
- Bungee Trampolines and Zorb Balls
- Classic Cars
- Live Music Stage
- Arena Displays
- Craft Stalls
- Refreshments

Plus much more to be announced, please follow our Facebook page 'Great Notley Village Fete' to hear all our plans.

The Notley Green Community Association



5 6 7 8...



We have a fantastic Infants (6 & under) class on a Tuesday at Notley Green Hall. They have just taken their first Rosette test in tap and ballet and are now getting ready for all the shows we are doing in the Summer. We only have a few spaces but if anyone would like to join, we would love to see you.

We have recently started a new class for juniors which is called PBT and is exercises to help ballet technique. It is proving to be very popular and a photo of two of the girls practising is below.

The older pupils are also getting ready for our annual display at the Cliffs in South-end and the “big” show at Chelmsford County High in July. Rehearsals are starting in earnest after half term.

You may not realise that we have classes at White Court School on a Saturday and the dance school has been there since the school opened in 1981/2. We have watched the primary school grow from its initial intake of about 50 pupils to its now over 500. Likewise, the dance club started in Miss Margaret’s dining room with 8 pupils and has grown to a successful dance school with a good reputation. Many of our ex-pupils have gone into showbiz but just as many turn out to be teachers, doctors, nurses, beauty therapists etc and we hope we have helped them on their way. Its so nice when ex-pupils bring their own children to dancing.

At Christmas we put on some class demonstrations for the parents and there are some photos of these below.



It has been great to see everyone back to enjoy dancing classes again. Contact Miss Margaret on

whitecourtdance@hotmail.co.uk

or follow us on facebook for more information.

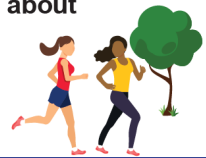


Are you looking to make changes
to improve your social, physical
and mental wellbeing?



Live Well Link Well is free and confidential support
of a non-medical nature. We can help you with:

- Healthy living
- Quitting smoking
- Physical and mental wellbeing
- Independent living
- Mobility and equipment
- Home adaptations
- Safety and security
- Looking after someone
- Social Inclusion
- Getting out and about
- Money worries



How do I access the support?

If you are aged over 18 and live in Essex

T: 0300 303 9988

(Monday to Friday from 8am – 7pm)

E: livewell.linkwell@nhs.net



Graham Butland, Tom Cunningham and Frankie Ricci

**2022-23 Annual Report of Braintree District Councillors:
Graham Butland, Tom Cunningham and Frankie Ricci**

As your local District Councillors who also serve on the Parish, we are always available to help with the issues that matter to year.

In the last year we have helped residents with parking issues, waste collection queries, council tax and benefit issues, business support and advice and have supported the community with grants from our local councillor community funds, including funding the Christmas tree on the village green.

Recently, residents have been concerned over the organised ‘motor racing’ in the vicinity. We have raised this issue with the Police and Crime Commissioner for urgent attention and will keep residents up to date.

As members of the Braintree District Council Cabinet, we are very pleased that the Council’s customer satisfaction levels remain high, particularly the waste collection service which residents feel is reliable and straight forward. These key statutory services must be our top priority, but we are extremely pleased that many of our long-term projects are coming to fruition. Adjacent, Horizon 120 is progressing well and interest in remaining plots remain high. Businesses are moving onto the site and with the emphasis on quality development, fellow residents will have noticed the signage and landscaping, ensuring that this a premium employment site. We were also very pleased that the Plaza Enterprise Centre, towards the bottom of the site has opened, providing conference facilities, space for businesses start ups and those who wish to hire a desk. Whilst this is supporting business growth, residents feel the double benefit of this investment, as the building is generating revenues for the Council to help pay for services. Recently the café opened, and the Plaza is complementing the rest of the Horizon 120 site well, as is the new pond which is a welcome addition to the country park trails.

As H120 switches from a building site to a place of work, we are con-

scious that it does not negatively impact residents and will continue to work with the Council to ensure that. We are also very pleased that Victoria Square development in Braintree has been completed, and the benefits of pedestrianisation are being felt in the town centre. Braintree District Council are setting this year's budget against a difficult financial backdrop and whilst there is likely to be an increase in council tax of 2.5%, and difficult decisions, there will be a commitment to supporting the most vulnerable in our society, community groups and businesses. Our financial position has worsened because of unprecedented inflationary pressures yet remains more favourable than many neighbouring authorities.

Thousands of residents in the Braintree District Council are concerned over the cost of living and using the proceeds of growth, unallocated 'new homes bonus' (collected for every new house built in the district), a major contribution, will be made to support organisations, helping the vulnerable in these difficult times. If we can be of any further help, please do not hesitate to contact us.



THE CHURCH IN GREAT NOTLEY NEEDS YOU!

Join our team today
and become a volunteer!

**WE APPRECIATE EVERY HELPING
HAND WE CAN GET!**

We need volunteers to help
out...

IN THE GARDEN
IN THE OFFICE,
ON THE SOUND DESK
AND PLAYING THE PIANO ON
SUNDAY MORNINGS.

If you are able to help,
please email Lisa on
treasurer.greatnotleychurch@gmail.com
or pop down to the church when we're
open!





WI

We meet on the first Monday of the month (unless a Bank Holiday) at 10:00 in the Great Notley Community Hall. We try to have a variety of meetings.

In August some of the members went to the gardens of Mr Brian Patient in Finchingfield. He and his wife have built these wonderful gardens. They ask for donations to the local CREAMER fund. Afterwards we enjoyed a lovely lunch at Winners.



In September Amanda Sutherland returned to give the second part of her Creative Story.

In October Brian Billins gave a talk on how certain London underground stations got their names.

In November, something completely different. We made Christmas wreaths using a polystyrene ring and old squares of Christmassy designed fabric. Everyone's was different and it was amazing how effective they looked. In December we had a short meeting with sherry and mince pies and a couple of quizzes before going to The Bell at Panfield for a very enjoyable Christmas lunch. Some of the things to look forward to later this year is line dancing in March, Saucy Post-cards in April with the AM and Coronation tea in May.

In June we have David Webb a former Yellow Coat visiting us. Come and give us a look.



Do more.

21 years young!

We can't quite believe that our Scout Group was established 21 years ago and that some of our earliest young people are now leaders in the Group.



Our Beavers, Cubs, Scouts and leaders climbed ...

1st Great Notley Scout Group

Find us at: facebook.com/GtNotleyScouts

Scout and about!

... and bounced too:

To celebrate this our Christmas party kicked off our 21st Birthday celebrations – with cakes of course!

Thank you to EV Connectors for sponsorship of the cakes – which were very popular!



You may have seen us at the Remembrance Day event, we were proud of everyone who turned out! We look forward to taking part in future village events.

Share more Join the fun

There are a number of volunteering opportunities available – from helping to run sections to organising events, to making tea at events ... just ask !!

There is also some space for young people in our Group – join the fun !!

Our Schedule:

Great Notley

Wednesday:

Beavers 5.30 – 6.45pm

Cubs 6.30 – 8pm

Scouts 7.30 – 9.15pm

Great Leighs

Monday:

Beavers 5.30 – 6.45pm

Scouts 7.00 – 8.30pm

Tuesday:

Cubs 6.30 – 8pm



**Advertising****Advertising in the Great Notley Times**

The Great Notley Times is delivered to approximately 3142 homes within the Parish of Great Notley. It is published by the Parish Council three times a year. The Parish Council are pleased to support local businesses by providing advertising space in this magazine.

Advertising rates are on a four editions basis so that your advert will appear in four consecutive issues. The rates are as follows –

Black and White Adverts

One eighth page £40

One Quarter page £80

One half page £160

Please note that the rates for the black and white adverts only guarantees an advert within each magazine and does not guarantee a specific space as the setup of the magazine is dictated by editorial content.

A limited number of full colour adverts can also be accommodated on the inside of the front or back covers at the following annual rates Half Page £200 and One Quarter page £100

To advertise in this magazine please contact the editor by email editor@greatnotley.org.uk where you will be sent a booking form to return to the same email address, you can also email your artwork to this address once your advert has been approved.



Get Involved

Could you be a Parish Councillor?

On 4th May 2023 there will be an election for Great Notley Parish Council and there will be spaces to fill so why not get involved and contribute to your community! The Parish Council is the first tier of democracy and deals with the issues directly concerning your parish.

What issues does the Parish Council deal with?

The Parish Council deals with the following matters –

- Employs a litter teams which provides around 70 hours a week of litter picking and maintenance in the parish including the emptying of litter bins
- Seeks to make the Parish and clean and tidy place to live by organising additional cleansing
- Liaises with other authorities regarding green initiatives and tree maintenance in the Parish
- Makes representations on planning matters and consultations effecting the parish
- Maintains and seeks to improve the Levens Way Play area and the RAFT play area so as to provide facilities for the young people in our Parish
- Promotes Health and Wellbeing initiatives including liaising with the local GP surgery
- Maintains White Court memorial and flagpoles
- Maintains some streetlights in the parish
- Supports local voluntary organisations through its Grant scheme and works with such groups in relation to community events.
- Publishes the Great Notley Times magazine and maintains a website and Facebook page to communicate important information to residents
- Maintains the storage unit
- Attempting to obtain land to set up an allotment site for Parishioners

- Organises Parish events such as the service of Remembrance
- Liaises with other organisations such as the police regarding parish matters
- Plans for the future of the parish

I'm not sure I have the time!

The Parish Council meets once a month except during August. The meetings are held on a Monday and last about 2 hours. Sometimes it would be useful to be involved in specific projects or activities which may take up more time. The day to day administration is dealt with by the Clerk. Most of the existing Councillors have full time jobs so the commitment of time is not excessive!

What sort of existing knowledge do I need?

The existing Councillors come from all walks of life and you don't need to be specially qualified. An interest in your community and a commitment to do the best for the residents of the Parish are the most important things together with your life experience and common sense views!

Would I be subject to any rules and regulations?

Councillors sign up to observe the Code of Conduct and complete a register of interests form to deal with issues of possible conflicts of interests. In addition, decisions may only be made by the Parish Council as a whole and not by individuals so you will need to be happy to be part of a team. There are also a variety of policies and procedures governing other aspects of the business of the Parish Council such as the good governance of finances. Guidance will be provided by the Clerk to new Councillors and also new Councillors are expected to undergo some training which will be paid for by the Parish Council to make sure they have a solid understanding of the running of the Parish Council.

Are there any specific qualifying requirements?

Yes! You need to be aged 18 or above, be resident or work either in the Parish or reside within 3 miles of the Parish, you should not have gone to prison in the last 5 years and you should not be bankrupt.

I would like to know a bit more.

You could always come along to a Parish Council meeting or feel free

to have a chat with the Clerk and if you like she can arrange for you to have an informal chat with an existing Councillor. Contact the Clerk on 01376 331251 or email greatnotleyclerk@gmail.com
How do I stand for election?

You will need to complete a nomination form and early in April 2023 the relevant forms will be available to download and complete on the Braintree District Council website <https://www.braintree.gov.uk/elections> or ring 01376 552525 and ask for the electoral department.

Great Notley TIMES

GP Update



Update

GP surgery Patient Participation Group

The Great Notley surgery wishes to let you know about its Patient Participation Group.

The aim of the group is to work with their practice to provide practical support, to help patients take more responsibility for their own health and to provide strategic input and advice. PPGs are based on cooperation between the practice staff and patients.

In particular the Group issues a regular newsletter which contains lots of useful information about the practice and managing your health and the group would particularly like patients to know how to obtain a copy.

You can download a copy at www.littlewalthamsurgery.co.uk/patient-participation-group and click on 'newsletter' on the left-hand side of the screen.



Woman's Institute Notley Green

As tradition, WINGs appealed to the community and received donations of poppies from various community groups to again decorate the village post, the Jubilee Oak tree and the village rock for the annual Parish Remembrance Service. Our thanks to all those involved.



The community also came together at Christmas with a panto and Carols around the tree where WINGs assisted. We decorated the donated fir tree on the green, served refreshments, our wardens handed out glow sticks, and helped with the setting and clearing up. Our entry to the Christmas Tree Festival was also a highlight.

In the lead up to Christmas our members had the opportunity to attend

several workshops to learn new skills and craft thanks to our National Lottery Awards for All. These included the mindfulness art of Mandala dotting painting, decorating a Christmas Bauble, beading to make a set of gorgeous angels to hang on the tree or give as presents, and making a fresh foliage Christmas Candle Table center decoration. We have more workshops arranged for spring.

Our Christmas social event enjoyed by all included cracker decorating with a surprise gift, quiz and a supper.

WI as a national body is all about Inspiring Women. We have a full programme of speakers and activities for our members as well as being involved in any up and coming community events. January was all about “Don’t ignore your Pelvic floor” with members practising some exercises to do at home. February was a creative one with a cake decorating demonstration.

Our programme of speakers/demonstrators for the next few months are:-

16 March – The History of Perrywoods

20 April – Women’s agricultural working during the First and Second World War

18 May – Our AGM with surprise activity

15 June – Roman Dining

20 July - Chair Aerobics – have a go!

Any non-member can attend a meeting as a guest and will be welcomed. So please do come along if you feel this is of interest to you. We also have subgroups, a Book Club, Film Club, Gardening Group, Knit and Natter as well as outings for walking, cinema and theatre trips.

Meetings are held on the third Thursday of the month at the Notley Green Community Centre Hall from 7.45 to 10pm including some social time, speaker or activity, a chance to meet old friends and make new ones. We really look forward to seeing you soon at one or visit us at a community event.

For more information contact: joinourwi@gmail.com

Visit us on Facebook: <https://www.facebook.com/womensinstitutenotleygreen/>



The Church in Great Notley is 25!

This year marks the first 25 years of the Church in Great Notley.

How did we get here?

We had very humble beginnings. It all started with a small women's prayer group, back in 1994. A group of women from different churches met and dreamed of a church in the newly planned area of Great Notley.

After a time of dreaming, praying and planning, different denominations (groups of churches) took the vision seriously, and decided to sponsor the church.

At first, we met in a portacabin donated by the developers and sited in the pub car park until 2002. Afterwards, as we grew, we moved to the community centre.



In 2006, planning permission was granted; in 2009, the first turf was cut, and in 2010, the church was opened and we moved in!



Why are we called The Church in Great Notley?

When it came to choosing the name of the church, the founding members were clear: we are **The Church in Great Notley**, because we are a people committed to serving and loving our community. We are made up of Christians from different church backgrounds (Methodist, Baptist, Anglican,

URC etc.) but we all come together to worship God and share God's love with those around us.

What do we do?

Each Sunday we gather to worship at 11am and you will be warmly welcomed.

But we are not just a Sunday people!

On Tuesdays we host a Foodbank and a coffee morning; on Wednesdays we host a baby and toddler group and a single parents support meeting; on Thursdays, we have a craft group, and on Fridays we have more coffee! We are home to a preschool, host to other community groups and activities, and we are also an excellent venue for a party!

You can find out more about us and our plans for this Silver Jubilee year on our Facebook page (The Church in Great Notley) or by contacting one of our ministers, Rev Rachel on 327277.



White Court School



Nurturing every little acorn to become a mighty oak!

**Forest
School**

**Breakfast
and after
school club**

School open days

Call our school office to book a tour

01376331801

If you're looking for a nurturing, engaging and enriching start to your child's school journey then come and visit White Court School where the staff, parents and school community work together to achieve the best for each and every child.

Visit our website for a virtual tour...

www.whitecourtschool.co.uk/welcome



SLAMSEYS
DOG FIELD

SECURE & PRIVATE
GREAT NOTLEY
www.slamseys.uk

Open Daily
BOOK NOW

ALL ABOUT GARDENS

**Garden Maintenance
& Clearance**

**Tree Surgery
& Removal**

Hard Landscaping



Robert - 07879 003135

The Electrical Man

Clive Coleman

Your local electrician

Free estimates and advice

Reliable Quality work

Reasonable Prices

Any job welcome large or small, rewires,
fault finding, security lighting

NICEIC/Part P Registered

TEL. Clive : 07860 599427 or 01245360297

clivercoleman@aol.com

Get your company
noticed by 3142
residential
properties in
Great Notley

Advertise here from as little as
£40 for four
editions of the Magazine

Contact the editor
editor@greatnotley.org.uk



ESSEX MOTORCYCLE BUYERS

We buy all Motorcycles, Mopeds
Scooters, British Motorcycles,
Barn Finds or Parts

LOOK IN YOUR SHEDS, GARAGES, GARDENS

Boxes of Parts Wanted

Call Darren : 07775 998628



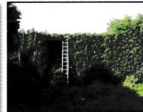
HENRY Your Local Tree Surgeon

Conifer Hedge Specialists

Trees / Hedges
Trimming, Topping
Pruning Service
Tree Crowning
Tree Reduction
Dead Wooding
Tree Felling

Wood Chipper Service

Tree Testing
Stump Grinding
Stump Removal
Trees Removed
Storm Damage
Waste Removed



Mobile : 07470 227144

Home : 01376 326163

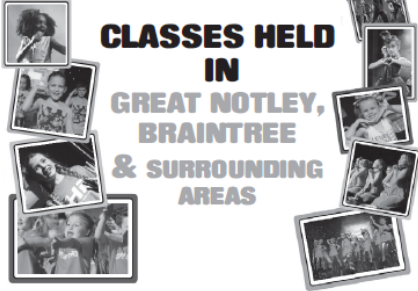
FREE ESTIMATES

DANCE • ACT • SING

★
Rascals
Theatre School

Est. 1997

**CLASSES HELD
IN
GREAT NOTLEY,
BRAintree
& SURROUNDING
AREAS**



For more details tel: 01376 331543

Email: admin@rascals-uk.com

Website: www.rascals-uk.com

 www.facebook.com/RascalsTheatreSchool



**Little Acorns Nursery at
White Court School**

The Nursery at White Court School aims to provide a safe, secure and caring environment for children aged 3-4 years.

Morning session – 8:45 a.m. to 11:30 a.m.
Afternoon session – 12:45 p.m. to 3:15 p.m.

Full days are available, with a small charge for lunchtime supervision.

Register now for September 2022 intake!

Registration forms can be obtained from the school website:-

www.whitecourtschool.co.uk
(under information on the Nursery page)

For more information please call the school office:

Tel: 01376 331801

OR

Email: EYadmin@whitecourt.essex.sch.uk

D. Want Plumbing

Great Notley 01376 348404

Mobile 07786 165643

Great Leighs 01245 633994

david@dwantplumbing.com www.dwantplumbing.com

All aspects of plumbing, heating and maintenance.

Supplying a local, friendly and reliable service for over 20 years.

- 6 month guarantee / 10% discount to new customers
- Bathroom and wet room installation specialists
- Leaks, dripping taps, repairs, showers and fault finding
- Kitchens
- Supplying and fitting tapworks water softeners
- Registered Aqualisa Installer
- Radiators and towel radiators
- And more.....



**Chartered Institute of
Plumbing and Heating
Engineering**

City & Guilds



**Find us on
Facebook**

Get your company
noticed by 3142
residential
properties in
Great Notley

Advertise here from as little
as £40 for four
editions of the Magazine

Contact the editor
editor@greatnotley.org.uk



**FIRST 2
HOURS
£10 EACH**



OR FIRST 10 HOURS £280

MALE/FEMALE INSTRUCTORS

01376

324448



www.mutlows.com




**Paul
Clark Printing**
LIMITED

Make a better impression

- Leaflets • Posters • Menus • Price Lists • Booklets
- Labels • Business Stationery • Business Cards
- Greetings Cards • Raffle Tickets • Invoices
- NCR Sets, Pads, Books • Plans



sales@paulclarkprint.co.uk
www.paulclarkprint.co.uk
01787 469628





Great Notley Photography Club



GNPC has had a busy start to the 2022/23 season with the first 3 rounds of our club DPI (digital images) competition, 4 social evenings (including our Christmas party), 2 speakers and a mobile phone challenge.

February sees us setting up the club's studio lighting equipment for our 'Lights, Camera, Action' night for our members to use and experiment with.

February also sees our first Print competition for this season where members can enter prints in both colour and/or black and white sections. The judge for this competition is Vic Hainsworth who is currently President of the EAF and PAGB Awards Secretary. We have our second print competition in May where members enter a panel of 3 photos.

Currently the DPI league is very close at the top with only 1 point between the top 3 so there's everything to play.



In the next few months, we have speakers Steve Hedges (presenting his "Cityscape and Night Photography" talk), Peter Warne (presenting his talk "The Wildlife of Epping Forest") and Jane Goodall (presenting her talk "Beautiful Light"). We also have a couple of 'hands on' members evenings and several 'photo walkabouts' scheduled, along with the remaining 2 rounds of the club DPI competition.


Montage of the images scoring 9+ out of ten from the first 3 DPI competitions this season.

Great Notley Photography Club is a friendly club and we pride our-

selves on the variety of programme including workshops, competitions, external and club speakers, photography outings etc. Our approach has always been to encourage members to get out and use their cameras from the simplest mobile phone to the most complex DSLR. As they say, the best camera is the one that you have with you - better to get the shot than no shot at all.

The club welcomes new members of all standards and all we ask is that you are keen to learn, share and develop your skills in photography. If you are interested in photography why not come along and meet us. We are always pleased to see new/prospective members at our meetings.

If you are interested, we hold meetings on alternate Thursdays at The Church, Great Notley. Details can be found on our website www.gnpc.co.uk or email gnpc.photo@gmail.com for details.



join us
Great Notley Photography Club

Whatever your choice ?
we are the local club for you

facebook @greatnotleypc www.gnpc.co.uk

for a life less ordinary...



OPEN MORNING
on Saturday 25th March,
from 9.30 to 11.30am.

Please call or email us at
schooloffice@howegreenhouse.essex.sch.uk
to register your interest.

HOWE GREEN HOUSE SCHOOL

Independent Co-ed Prep School for 4 to 11 years and Little Oaks Nursery School for 2 to 4 years

www.howegreenhouseschool.co.uk

01279 657706

GN



01787 383103

07956 665272 / 07506 614193



FAMILY RUN COMPANY WITH 40 YEARS EXPERIENCE

**DOMESTIC &
COMMERCIAL
DRAINAGE**

SERVICES INCLUDE

- SEWAGE TREATMENT PLANTS & SEPTIC TANKS
- 24 HOUR EMERGENCY SERVICE
- BLOCKAGE CLEARANCE
- CCTV SURVEYS
- DRAINAGE EXCAVATIONS
- DRAIN DESCALING & ROOT REMOVAL
- WATER MAIN REPAIR & INSTALLATION



www.ashenviro ltd.co.uk



ashenviro ltd@gmail.com

**Update**

The Great Notley Table Tennis club is a fun club that meets every Thursday morning at the Community Centre Hall between 10am and 1pm. The three hour session gives flexibility so that members can come for all or part of the morning. We have 5 tables in use so there is never too much sitting around waiting for a game. We are a very sociable and friendly club and we welcome new players. Our members have very mixed levels of ability. If you would like to come along and have a couple of free taster sessions or would like any other information please call club secretary Pauline Davis on **0752 7079112**.

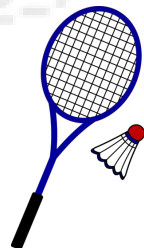
Many thanks
Pauline Davis
Secretary GNTTC

**Update**

If you enjoy social badminton then please call in any Tuesday between 1.30pm and 3.30pm at the Notley Green Community Hall and join us for a FREE taster session. There is a small session fee on subsequent occasions.

It doesn't matter what standard you are or whether you have never played before. We are a friendly bunch, so just drop in and give it a try. We can supply a racquet, but please wear trainers with non-marking soles.

Contact Keith on 01376 327687 or just turn up!

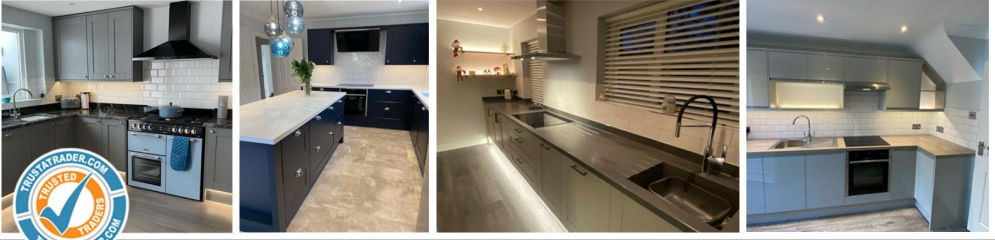




Organisation	Contact	Contact Details
Art Club	Isobel Chaudry	01376552376
Badminton	Keith Hind	01376 327687
Carpet bowls	Ray Hall	01376 749580
White Court Dance club	Margaret Cave	07809 042964
Church in Great Notley		01376 330988
Women's Institute	Linda Pickers	07713 754414
NGCA		01376 348449
Photography club		gnpc@gmail.com
Slamseys	Ruth Wheaton	01245 361400
Scouts	Ann Quartermain	ann.quartermain@greatnotleyscouts.org
Table Tennis Club	Pauline Davis	0752 7079112
Toddler Group	NGCA	01376 348449
Workout	Brendan Cassidy	thechair@ngca.org.uk
Gardening Club	Pauline Inskipp	01376 342165
Local History Group	Mike Bardell	topbard@yahoo.co.uk
Notley Yoga	Leigh Acteson-Rook	07723 321818
Feel Good Pilates	Karen Blackburn	07515 547683
GP Surgery		01376 341411
Ducklings Pre-School	Julie Cook	01376 340432
Little Notleys pre-school	Steph Long	01376 339590
Busy Bees nursery	Melissa Harrison	07723 321818
White Court Primary School	Candida Burrell	01376 331801
Notley Green Primary School		01376 343485
Brownies and Rainbows		www.girlguiding.org.uk/interested
Rascals	Diane Neave	01376 331543

Contact us on social media!   @tndevelopmentsltd

- Complete Design & Project Management -
- High Quality Finish -
- Family Run Business -
- Professional & Friendly Team -



www.tndevelopments.com 07979 322225 / 07876 202926

Choose *home*

Personalised, private care in your home.

We can help with:

- Personal care
- Medication and transport
- Household tasks
- Companionship



Call: **03330 135 438**
Email: info@eclcaresolutions.co.uk
Visit: eclcaresolutions.co.uk

ecl care 
solutions



Clerk: Suzanne Walker
Tel: 01376 331251
E-mail: greatnotleyclerk@gmail.com

Parish Councillors

Dorothy Griffin
(Chairman) 7 Thatcher's Way, Great Notley, CM77 7HB
cllrdgriffin@greatnotley.org.uk
01376 554990

Frankie RICCI
(Vice-Chairman) cllrfricci@greatnotley.org.uk
07850 264115

Graham Butland cllrgbutland@greatnotley.org.uk

Barry Crawford 10 Bridge End Lane, Great Notley
07966 550507
cllrb Crawford@greatnotley.org.uk

Tom Cunningham 07891 537669
Clrrtcunningham@greatnotley.org.uk

Tony Pritchard cllrtpritchard@greatnotley.org.uk

Graham Sheppard cllrgsheppard@greatnotley.org.uk

District Councillors

Graham BUTLAND, Frankie RICCI and Tom Cunningham - contact details above.

County Councillor

Graham BUTLAND graham.butland@essex.gov.uk

www.greatnotley.org.uk