



Great Notley Times
57 Autumn 2023

THE
AMERICAN ARMY
HOSPITAL
WHITE COURT PARK

U.S. ARMY 12th EVACUATION HOSPITAL
29th APRIL 1943 - 7th JULY 1943

U.S. ARMY 121st STATION HOSPITAL
30th JUNE 1943 - 11th JUNE 1945

OPENED AS A 750 BED, LATER BECOMING A 1354-BED HOSPITAL. GIVING MEDICAL SERVICE TO 35 U.S. 8th AND 9th AIR FORCE UNITS. FOLLOWING D. DAY, 6th JUNE 1944, THE MAJORITY OF ADMISSIONS WERE THE SOLDIER CASUALTIES FROM THE BATTLEFIELDS OF EUROPE.

THIS MEMORIAL IS IN HONOUR
AND MEMORY OF THE
OFFICERS - SURGEONS - NURSES - ENLISTED MEN
HOSPITAL SERVICE GROUPS - AMERICAN RED CROSS

'SERVICE ABOVE SELF'

THIS MEMORIAL WAS DEDICATED
ON THE 15th AUGUST 1992
TO CO-INCIDE WITH THE 50th ANNIVERSARY.
U.S.A.A.F. IN EAST ANGLIA.
1942 - 1992





LITTLE NOTLEY'S PRESCHOOL

The Church in Great Notley
phone : 07583 506054 or 01376 33950
Email : littlenotley@btinternet.com
Website: www.littlenotleyspreschool.co.uk

WHY CHOOSE US ?

We are passionate about children and giving them the best start in life and their journey to education. Our timetable of activities is creatively designed to each child's unique personal development needs. Being small and locally owned we encourage a sense of belonging within our community. Providing a safe and homely environment where your child can establish friendships that build their confidence through the shared discovery of new things. Our dedicated, qualified and experienced staff create a secure, safe and stimulating environment that encourages the children to play, explore and learn through exciting activities that children enjoy.

COME AND VISIT US

CALL NOW!

Visit our website

Visit www.littlenotleyspreschool.co.uk for more information



Serving the Great Notley community

We invite you visit us. If you would like to make an appointment to come in please give us a call. We have an open door policy so we encourage you to stop in at anytime for a visit.



Learning through play

Learning through play helps children gain social skills and thrive. We provide a range of stimulating activities enabling children to explore their physical and creative talents.

Now enrolling

Little Notley's Preschool welcomes children from two to four years of age and can accept government funded places from the age of three.

Safe and stimulating

A welcoming indoor and outdoor environment that motivates children to learn. Toys, books, equipment and facilities to keep children entertained and stimulated throughout the day.



We are at home in Great Notley



Your Local Property Specialists

Thinking of buying, selling or renting? There is only one number you need

01376 341 141

www.hamiltonpiers.co.uk 7 The Square, Great Notley, CM77 7WT
780 Associated Offices including Chelmsford and Park Lane, London W1



Great Notley TIMES

Edition	Input Deadline	Delivery
Summer	May 24th	End of June
Autumn	Sept 24th	End of Oct
Winter	Jan 24th	End of Feb

Edition 57: Autumn 2023

Contents

4-5 News from the Chairman	23 Social Badminton
7 Service of Remembrance	24 Carpet Bowles
8 Braintree Lions	26-27 Notley Green Community Association
10-11 Walking Group	28-29 Great Notley Church
12-14 WINGs - WI Notley Green	29 GP Update
15-16 White Court Dance	31 Public Stargazing
17 Scouts	32-33 Police Choir
18 Crime Prevention	34 Parish Contacts
19 Great Notley Primary School	35 Parish Councillors
20-22 Photography Club	

**Uniting the Parish areas of: Cut Hedge - London Road -
Notley Green - Oaklands Manor - Panners Farm -
Slamseys Farm - White Court**

Cover image - Taken by a member of the Great Notley Photography Club

**Local articles of interest, residents views and comments are always
welcome and should be sent to the Editor.
email: editor@greatnotley.org.uk**

Great Notley TIMES

Whilst Great Notley Times is supported by the Great Notley Parish Council, the views expressed within it are not necessarily those of the Council





We are now into the middle of an autumn which began in the most spectacular way. The weather was beautiful and went quite a way to making up for the fact that Summer had not been so good. I suppose some of you found the holidays were not as sunny as you would've liked, and it was unfortunate that the summer fete had to be cancelled.

There have been some changes to the Council since the elections in May when we were lucky enough to welcome John Cogswell, as a new councillor, so bringing us up to our full number of members. We also wished the clerk, Suzanne Walker, our best wishes as she left for a new position as a clerk for a newly formed parish in Chelmsford. We were very pleased to welcome our new clerk, Elizabeth Winter, who, after a whirlwind introduction to our parish, has settled in as a valuable asset to the team. She literally hit the road running and I am sure those of you who have come across her will agree she is doing a tremendous job.

Liz has taken over the administration of our website and Facebook pages which keep you up to date, and has answered questions about where to find information whenever possible. Please remember that the Parish Facebook page is for sharing information and we are always happy to hear from residents and also welcome you to our monthly meetings. In particular, we are asking for residents to share their views on the current format of our Great Notley Times publication. Do residents enjoy the hardcopy issues? Would you consider it to be more cost effective to move to sole softcopy publication via our website and social media? We are aware of the continued problems with Royal Mail's Door to Door delivery and so, we shall be seeking alternative delivery arrangements (should we continue to produce hardcopies) for the Spring 2024 issue. Feedback on the GNT can be sent to the Clerk via email: greatnotleyclerk@gmail.com.

We continue to look for land suitable for allotments and have recently had new suggestions from Braintree District Council who seem to be finding it a difficult task. The Parish itself does not own any land and so far the land available has not been suitable, mostly for reasons of soil quality and accessibility. By the time this article is issued we

should have more information. We recognise residents' frustrations and we intend to press the District Council for a tangible response in the coming months.

As ever, noise from the A131 is causing a lot of distress to some residents and though the police have taken action it seems not to deter those causing the problem. We have therefore invited the police to a meeting to explain what their position is and what steps they are taking to mitigate the situation.

We continue to try to keep the village as litter free as possible and have surveyed the litter bins in order to replace those in poor order whilst the litter team continue to pick up after those who are not as thoughtful as they should be. The annual inspection of the play areas has been taken place and repairs will be done where indicated. The footbridge to the green has been repaired by Braintree District Council and fences in some areas have been noted as needing attention as are the gates at the entrance at Panners.

The Remembrance Day service this year will be on the green as it was last year. The Vicar, the Scouts and Brownies will be with us, as usual, alongside other groups and pupils from our primary schools. There will be tea and coffee etc. available in the Community Centre afterwards. The WI group 'WINGS' are helping to make this event successful and we are grateful to them, as well as NGCA for the use of the Hall.

As this will be the last GNT publication for 2023, I should like to take this early opportunity to wish you all an enjoyable and healthy Winter season, once it arrives. We do hope to collaborate with The Church in Great Notley for some community events and with that in mind, the Clerk will be meeting with Reverend Prior in early October to discuss possible plans. Keep your eyes peeled!

In the meantime, enjoy the Autumn.

Dorothy Griffin



ESSEX MOTORCYCLE BUYERS

We buy all Motorcycles, Mopeds
Scooters, British Motorcycles,
Barn Finds or Parts

LOOK IN YOUR SHEDS, GARAGES, GARDENS

Boxes of Parts Wanted

Call Darren : 07775 998628



Britannia W Harris & Moovit SelfSTORE

24HR Secure Self Storage

&

Secure Shredding Services

01376 326946

07808 634979

tom@wharrisremovals.co.uk

MOVERS-SHIPPERS-STORERS

VAN HIRE – CAR STORAGE

'Braintree's original Family Owned
moving & storage company since 1968'



Britannia
W. Harris & Moovit

>>> Could YOU be a Blood Runner? <<<



↓ See our article ↓

EssexVoluntaryBloodService.com



Least we forget

**All residents are invited to the
Service of Remembrance
Sunday 12th November 2023
At 12 Noon**



*“At the going down of the sun and in the morning we
will remember them.”*

**Please note that to accommodate the numbers of
people who now attend this event it will be
taking place on the green behind the
Community Centre this year and not at the White
Court Memorial**

**Food and drink to be served afterwards in the
Community Centre**



Santa Meet & Greet

Braintree Lions Club are pleased to advise that arrangements are in hand for the annual Christmas collection around Great Notley and White Court.

Father Christmas will be visiting Great Notley and White Court during December.

We shall be touring the estates from 6.00pm. Please look out for our information boards which will be distributed a couple of days before each collection.

Last year residents of Great Notley and White Court kindly donated some £1500 which was used for the benefit of local organisations and individuals. Please note that no administration costs are charged to monies collected. 100% is used for the purposes indicated

For further information please refer to the club's website www.braintreelions.org.uk



digi go

on demand



DigiGo - Travel on demand

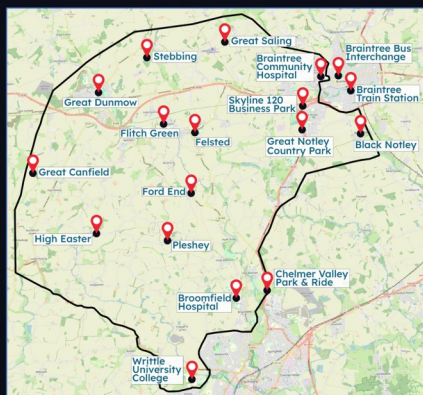
DigiGo is a form of shared public transport that has no fixed route or timetable - travel freely anywhere within the operational area

- The service can be booked on-demand (within 15-20 minutes) or up to 7 days in advance
- All our single fares are capped at £2 until 31 October 2023 and then £2.50 until November 2024
- DigiGo operates 7 days a week, from 7am until 10pm, excluding Bank Holidays

Visit www.digigo.uk for more information



Book, Track, Ride
via the **TravelEssex** app



How do I book?

Scan here to download the **TravelEssex** app and book a DigiGo journey



Alternatively, we have a telephone booking option for those unable to use the app 03330 137 138., available Monday to Friday, 10am till 12pm (excluding bank holidays)



Update



Braintree

“The walking group with something for everyone”

Like many other people, we got rather fed up with the unpredictable weather this summer, as can be seen by the picture below, taken at the start of our 'country walk' at Pleshey. Fortunately, the sun came out later and we were able to enjoy a pub lunch afterwards.

Sadly, in recent months, the lives of several of our walkers and their loved ones have been affected by cancer, so we decided to make this walk into a fundraiser and were pleased to be able to donate over £450 to Farleigh Hospice in July.

Often, however, the sun shines throughout our outings. When it does, the Witham river walk, our usual Saturday route, makes for very pleasant walking.





We offer walks of varying lengths to suit everyone
Mondays: Gt. Notley - Meet at Panner's Coffee Bar by 10:30 am
Wednesdays: Braintree, Meet in Marks Farm Tesco car park by 10:30 am
Saturdays: Witham - Meet in Morrison's car park by 10:00 am

There's always the chance for coffee/tea and a good chat after a walk, or sometimes even instead of it.



For fun, exercise and companionship, why not come and try us out?
For further details:
Email angela@angelagakis.com or Phone 07799 068408



(Women's Institute) Notley Green

Roman Dinning by Richard Bale was the informative and interesting talk we had at our June monthly meeting, On a lovely summer's evening, at the end of the month, members were invited to have some fun at playing Pentanque on the newly built pitch in Black Notley. To round off the evening, a well deserved and refreshing drink was taken in the local pub.

In July members spent an entertaining, musical and fun session all sitting in our chairs working out with chair aerobics. Singing with props also added to the fun.



August was packed full of activities. Our monthly meeting was out and about on a lovely evening around the village Rayne with Rayne Heritage Trail for on a historical and informative walk. Two groups were lead around Rayne

with guides, learning about all the local history of buildings, monuments, businesses and families that lived and influenced the village throughout time. Of course in true WI style we finished at Rayne Station Café for tea and cake.



Beeleigh Abbey Gardens was another afternoon's visit where members admired the beautiful gardens, gaining inspiration and knowledge for their own, enjoyed a spot of lunch and of course bought some plants as a memento to take home for their own



gardens. A small group attended an open air theatre trip to see Persuasion by Dot productions in the Grange Barn, Coggeshall.

To end the month and summer read the Book Club met up for a social evening in the pub. They discussed 4 books, time to chat and catch up with friends.

September also brought us our first Quiz evening – open to everyone as a community event.

Any non-member is welcomed to come along and attend one of our meetings as a guest.. So please do come along and join us if you feel our WI is of interest to you.. We have a range subgroups for all interests such as, a Book Club, Film Club, Gardening Group, Knit and Natter as well as going on outings like the cinema and theatre trips.



Our programme of speakers/demonstrators for the next few months include:-

- 19 October – Being an independent Celebrant – Ruth Salisbury-Higgs
- 16 November – Woolly hats
- 21 December – Christmas Social

Meetings are held on the third Thursday of the month at the Notley

Green Community Centre Hall from 7.45 to 10pm including some social time, speaker or activity, a chance to meet old friends and make new ones. This is what WINGs do - we support our local community, we bake, we craft, we sew, we campaign, we educate and inspire, we love a good party – it's not all jam and Jerusalem. So why not come and find out more as we would really look forward to seeing you soon at one of our meetings or visit us at a community event.

For more information contact:

joinourwi@gmail.com

Visit us on Facebook:

<https://www.facebook.com/womensinstitutenotleygreen/>



Great Notley TIMES

GP Update



Update

GP surgery Patient Participation Group

The Great Notley surgery wishes to let you know about its Patient Participation Group.

The aim of the group is to work with their practice to provide practical support, to help patients take more responsibility for their own health and to provide strategic input and advice. PPGs are based on cooperation between the practice staff and patients.

In particular the Group issues a regular newsletter which contains lots of useful information about the practice and managing your health and the group would particularly like patients to know how to obtain a copy.

You can download a copy at www.littlewalthamsurgery.co.uk/patient-participation-group and click on 'newsletter' on the left-hand side of the screen.



5 6 7 8...

Summer Term was probably the busiest White Court Dance has ever known.

First of all every Pupil that comes to the Saturday class danced at White Court Fete. There were about 70 participants from the very littlest three-year-old to our seniors where we also celebrated Mia's 18th birthday. The fete was used as our final rehearsal for our performance at the Cliffs which was the following day.



The coach arrived at 10.00am to take us to the theatre where we were given the band room to use as a changing room backstage. After a short rehearsal on the stage and a full-on practise of the finale with all the other groups the curtain rose to a full house. We were number 3 with our "Breathe of Life" a lyrical number which showcased our pupils' lovely technique followed by our "Michael Jackson Medley" which included standards such as Smooth Criminal and Thriller. It was great fun.

Just a week later the whole school had the dress rehearsal for our annual show "Rocking Around the World" and then the actual performance on 16th July. It was at The County High School which is a fabulous venue. The school made us feel very welcome and one of their



schoolteachers brilliantly managed the sound and lights for us. There was plenty of room for all the children to be backstage which was fortunate as it was a very hot day.

Thanks to the backstage helpers the show ran like clockwork and the children were amazing and had a wonderful time. I'm sure everyone will agree the stars of

the show were the “babes”. They twirled and jumped and pointed their toes and ... sang very loudly, chatted to the audience and we even had a little one who preferred to be a crab.

The dance school rested for the summer after the show and the Autumn term starts on 9th September. Whilst most pupils will be working towards exams some of them will also be rehearsing for another show. This time in the West End at His Majesties Theatre, Haymarket in November.



If anyone would like to join us there are lessons in Ballet, Tap, Acro, Lyrical, Freestyle and Street at Notley Green and White Court School. Contact Miss Margaret on whitecourtdance@hotmail.co.uk or follow us on facebook for more information.

Scouts

1st Great Notley Scout Group

Here we grow...



Scouts for 4-5 year olds:

So, what can Squirrel Scouts do? Lots of things:

- Play games
- Learn about their world
- Meet new people
- Go on visits
- Crafts
- Listen to stories
- Earn badges
- ...and so much more!

Squirrels is for parents too!

We have new volunteer leaders for the Squirrel section and are looking for more leaders to enable us to expand the numbers over the next few months. If you would like to join the fun too, please contact the Group Lead Volunteer:

Ann.Quartermain@greatnotleyscouts.org

Squirrels: the newest branch on our family tree

Squirrels

New Squirrel Scout Drey

In early October we open our first Squirrel Drey for 4- and 5-year-olds. This is an exciting new development for our Scout Group and is only the second Squirrel Drey to open in the Braintree District.

An initial interest meeting was held with the parents/carers of young people already on our waiting list for Beaver section and the initial spaces have all been taken up. If your young person would like to join the fun, in Squirrels or one of the older sections, please contact:

Beth.Smith@greatnotleyscouts.org

District Camp

In early September 56 Beavers, Cubs and Scouts had a weekend of camping, climbing, archery, backwoods cookery, campfire, games and so much more ...

With over 400 people from around the Braintree District Groups the camp was a major undertaking and great fun was had by all!!



Remembrance Day

We look forward to seeing everyone at the event on the village green on Sunday 12 November. Do come and say hello to us afterwards!

For more information view our Facebook page or contact:
Ann.Quartermain@greatnotleyscouts.org

scouts.org.uk/join

#SkillsForLife

Copyright 2020 The Scout Association Registered Charity number 306101/92338437

 1st Great Notley Scout Group
 @UKScouting



Twelve tips for Christmas...and after

With Christmas rapidly approaching here are a few seasonal tips to help keep you safe at home, shopping, visiting, and after Christmas too:

- If you need to store Christmas food and drink, presents and other goodies within garages and outbuildings, ensure what you are storing is out of sight and that the building is securely locked with good quality well fitted locks. Treat your shed to a shed alarm.
- Avoid tempting window shopping burglars; don't leave presents and valuables on full view in front of a window. Having parcels delivered, and may be out, make sure that you make suitable secure delivery arrangements to reduce the risk of theft.
- Whenever leaving the house always ensure that your windows and doors are closed and locked. Don't attract burglars to your home by leaving it in darkness; leave lights on timers, perhaps treat yourself to a TV simulator too.
- Lock gates to keep unwanted visitors from getting to the rear of your home.
- When you go to leave the house and find that your car is all iced up, don't leave it unattended with the engine running to de-ice it. It only takes a second to steal your car and it would invalidate any insurance claim.
- Park safely; look for a 'Park Mark' accredited car park www.parkmark.co.uk/car-park-finder Check that your car is locked before you leave it and don't leave valuables and gifts on display in your car.
- Whether an evening out or Christmas shopping keep your bags, handbags, wallets and mobile safe. Busy places make it easier for the sneak thief, so be alert at all times.

A Christmas get together – make sure that you have considered how you are getting home in advance and avoid using unlicensed taxis. Ensure you drink responsibly, and are aware of your surroundings, whilst keeping your drink and belongings safe.

www.suzylamplugh.org/Pages/FAQs/Category/personal-safety

- Watch what you put on social media; check your settings to ensure that you are not broadcasting when you are not at home and the lovely gifts you may have received.
- After Christmas don't advertise your nice gifts to the thieves by putting the empty boxes out for collection, disguise them, fold them up inside out or put them inside another non-descript box.

Record your new property free on www.immobilise.com, install tracking and security apps on relevant electrical and computer products. Consider a property marking product.

Have a Great Christmas and New Year!! ☺

For further crime prevention advice see: www.essex.police.uk/cp/crime-prevention/ or <https://www.securedbydesign.com/guidance/crime-prevention-advice>



Every Child Is An Artist



Notley Green Primary School

"Every child is an artist"

Pablo Picasso

At **Notley Green**, we have a passion for **art!** As we journey through school, we learn about lots of inspirational artists.

We learn about their techniques, use of colour, shade or shape and their creative processes.

We study the artists work in detail and then begin to plan our own beautiful version!

We use our sketch books to rehearse all the skills we need for our final pieces.

We finish our art projects by producing our spectacular images.

We are so proud of our work and have it on display around our school.

What do you think? Can you guess any of our artists?



Get your company noticed by over 2000 residential properties in Great Notley

Advertise here in **FULL COLOUR** from as little as £40 for four editions of the Magazine

Contact the editor
editor@greatnotley.org.uk



July saw the end of the 2022/23 season with presentations at the AGM for the winners of the various categories as below:-

Trevor Partridge won the DPI competition; (*This is a digital league competition held over the season*)

David Beardwell won the overall Print competition; (*best average scores over the year from our print competitions*)

Tom Lewington was awarded a special award for his prints (*Tom didn't enter sufficient prints in the print comps to qualify for the overall but the 4 that he submitted scored 3x10 and 1x9.5 which we felt was deserved of some acknowledgement*);

Liz Beardwell and Jill Griffiths tied for Most Improved Member(s); and

Jill Griffiths won the Image of the Year (*voted for by Club Members from the images that scored 10/10 during the year*).

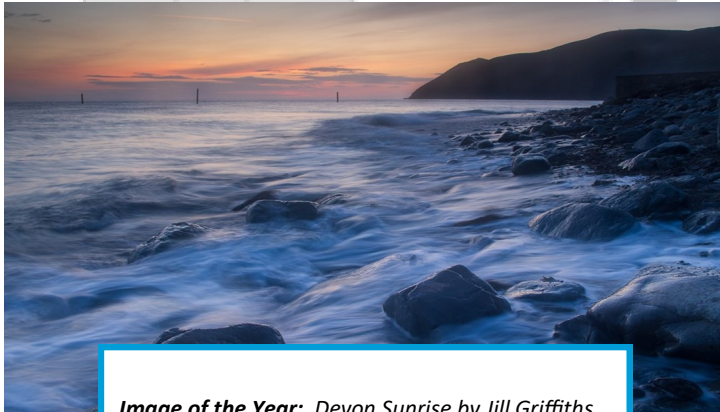


Image of the Year: Devon Sunrise by Jill Griffiths

The 2023-24 season started up again in September. Our first meeting on Thursday 7th September was a Members' Social Evening. This was an informal evening where we set out the forthcoming season's programme, had a catch up, chat and a few nibbles.

We have a varied programme for the coming season with speakers

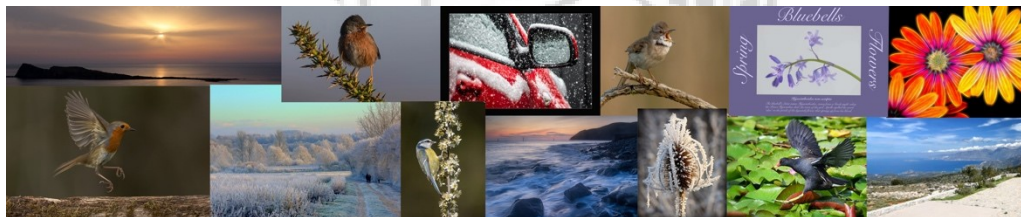
(both club members and external speakers), digital and print competitions, practical evenings, photo walkabouts plus a few inter-club competitions along the way. For full details please see our website www.gnpc.co.uk or our Facebook page <https://www.facebook.com/greatnotleypc>

As last year our club members will be the official photographers for Cressing Temple Barns' Apple Day on 8th October. We will be taking photos of the day and will also have a display exhibiting some of our members' work.

Great Notley Photography Club is a friendly club and we pride ourselves on the variety of programme including workshops, competitions, external and club speakers, photography outings etc. Our approach has always been to encourage members to get out and use their cameras from the simplest mobile phone to the most complex DSLR. As they say, the best camera is the one that you have with you - better to get the shot than no shot at all.

The club welcomes new members of all standards and all we ask is that you are keen to learn, share and develop your skills in photography. We would be pleased to see new/prospective members at any of our meetings.

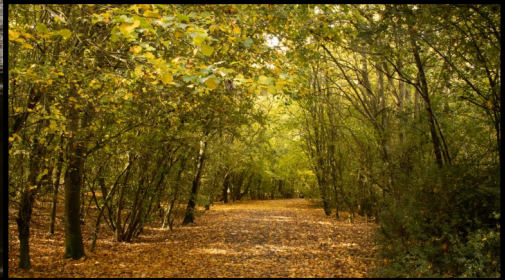
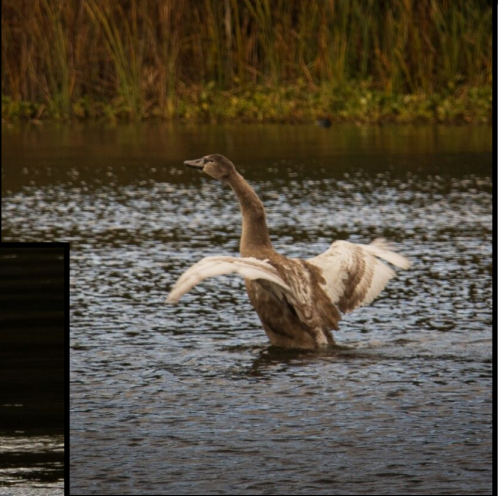
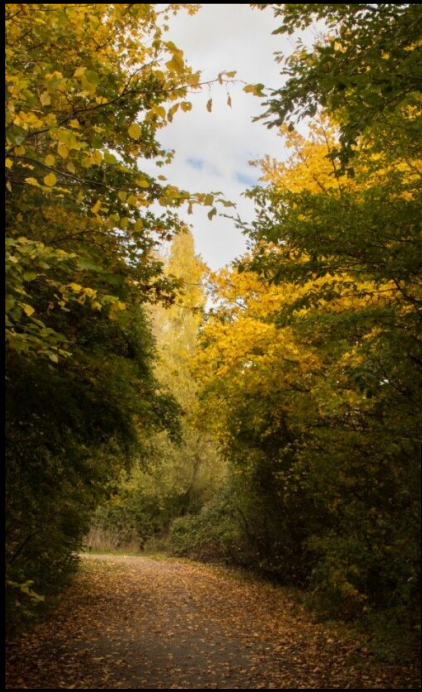
If you are interested in coming along, we hold meetings on alternate Thursdays at The Church Hall, Great Notley. Details can be found on our website www.gnpc.co.uk or email gnpc.photo@gmail.com for details.



Images scoring 10/10 during the 2022/23 season



More Images from the Club



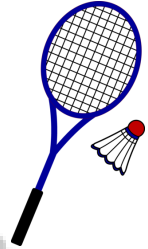


Update



If you enjoy social badminton then please call in any Tuesday between 1.30pm and 3.30pm at the Notley Green Community Hall and join us for a FREE taster session. There is a small session fee on subsequent occasions.

It doesn't matter what standard you are or whether you have never played before. We are a friendly bunch, so just drop in and give it a try. We can supply a racquet, but please wear trainers with non-marking soles.



Contact Keith on 01376 327687 or just turn up!

SLAMSEYS
DOG FIELD

SECURE & PRIVATE
GREAT NOTLEY
www.slamseys.uk

Open Daily
BOOK NOW

Get your company
noticed by 3142
residential
properties in
Great Notley

Advertise here from as little
as £40 for four
editions of the Magazine

Contact the editor
editor@greatnotley.org.uk



Jack!

Well not quite the summer that we had last year which unfortunately resulted in the cancellation of the Great Notley Fete. In previous years we had laid out a mat in the Community Hall for members of the general public to try their hand. This is always a good time to encourage local people to come along and give Carpet Bowls a try. There was a trophy for the person with the highest score.

The new league season is almost upon us and once again our opening fixture is against our old friends Feering on the 28 September. Last year the Club had one of its most successful years eventually finishing 3rd.

Unfortunately, this year has again seen a reduction in the number of teams competing in the Chelmsford East Section of the Essex County Carpet Bowls Association, with just 5 teams competing, which is one less than last year. We are expecting to have at least one new player in our League squad who only joined the Club last year as a complete novice but has made considerable progress.

Our AGM took place on Thursday 7 September following the regular afternoon session. It was well attended and the Officers were all voted back in for a further term. Last years social evening was once again a great success and we have scheduled this years event for 9 December. The format will be as previous with a fish or chicken and chips supper following a Quiz with questions devised by our Secretary Tony Day. This is never taken too seriously with plenty of banter and laughter. Attendees bring their own refreshments, alcoholic or otherwise.

Although our membership is still at a good level we sadly lost a couple of long term members in the last year, but have had additional members join and they are enjoying our twice weekly afternoon sessions. If you feel that you would like to give carpet bowls a try, no equipment needed as all supplied by the Club, please come along to one of our afternoon sessions on either a Monday or Thursday from 1.15pm until around 3.30pm. I can assure you that you will be made very welcome and even given a cup of tea and biscuits at the half-time interval.

Best wishes
John Andrews
Notley Green Carpet Bowls Club.

Daniel Robinson & Sons

Your local

Independent Family Funeral Directors

Est. 1892

Contemporary and traditional funeral services, as unique as the loved one remembered.

Our friendly team are located in Manor Street, in central Braintree, we offer our services to families, with compassion, professionalism and the greatest care.

24 hour service, every day

Memorial Masonry

Prepaid Funeral Plans & Funeral Wishes

For more information, please contact us:
7 Manor Street, Braintree, CM7 3HW

www.drobinson.co.uk

Enquiries@drobinson.co.uk Tel: 01376 320582



join us

Great Notley Photography Club

Whatever your choice ?
we are the local club for you



facebook @greatnotleypc

www.gnpc.co.uk



NOTLEY GREEN COMMUNITY ASSOCIATION

Registered Charity No 1058443

NGCA Chair

An exciting opportunity has arisen for the role of Chair of the Notley Green Community Association (NGCA). The NGCA is a charitable organisation responsible for the running of the Village Hall in Great Notley.

Roles and responsibilities include:

- Work with the hall manager and committee members to deliver the annual maintenance plan
- Help to plan and organise fundraising events to ensure the organisation remains financially stable
- Lead 4-6 committee meetings a year to discuss progress and ensure the smooth running of the organisation

The ideal candidate will be able to donate a few ad hoc hours a week to the role.

This is a voluntary role and a great chance to be part of this thriving local community group.

Please contact Nicky Parkinson, nicky@ngca.org.uk for further information.

Closing date for applications is 31st October 2023.



NOTLEY GREEN COMMUNITY ASSOCIATION

Registered Charity No 1058443

NGCA Treasurer

Do you have an accountancy background and willing to support a local, charitable community group?

We have a vacancy for the role of Treasurer for the Notley Green Community Association (NGCA) based in Great Notley. This is a voluntary role and a great chance to be involved in this local charity, which looks after the smooth running of the village hall.

Roles and responsibilities include:

- General financial over-sight
- Financial planning and cash-flow management
- Maintenance of financial records
- Preparation of annual financial statements
- Attendance at regular committee meetings

If you would be interested in giving something back to your local community, please get in touch with Nicky Parkinson, nicky@ngca.org.uk for further information.

Closing date for applications is 31st October 2023.



Introducing...

The Church in Great Notley is delighted to announce that we have two new members of our team to join our current ministers, David Sebley, Rachel Prior and Roman Kukiewicz.



Lisa Gregson is our new administrator.

One of her key roles will be dealing with enquiries and administration for Life Events (baptisms, weddings and funerals) across our three churches. As the role develops, Lisa will also support with communications. If you are interested in arranging a Life Event, please contact Lisa.

She will be based in the Church Office, working Tuesday, Thursday and Friday mornings.

Her contact details are admin@thethreechurches.co.uk or landline 01376 330988.



Rev'd Nikki Horsley is our new curate.

Her contact details are: revnikkihorsley@gmail.com or mobile 07810280002

What's going on at The Church in Great Notley?

For adults

Coffee Morning: every Tuesday and Friday morning 9am-12pm

'Crafty Cuppa' Craft morning: every Thursday 9.30-12pm

Bring along any craft, and come and enjoy some company at the church.

Ladies Oasis: every 3rd Monday from 7pm-9pm

A friendly group for women to chat, learn a craft, and have a glass of wine together.

Solo Parenting Group: every 1st Wednesday from 1-3pm.

If you are parenting alone, for whatever reason, please come along to find a supportive and friendly group of others in the same situation.

For little ones and families

Snackanory Baby and Toddler Group Every Wednesday 10-11am

A group for little people and their carers, lots of toys, tea and coffee, and singing together at the end. £2 suggested donation.

Lego Club for Primary Aged Children: Every Tuesday 3.45-5pm

All families welcome for some lego play.

Youth Drop In: the Fourth Friday of every month 7-8.30pm

A youth group for year 6 plus with games, fun, and creative activities.

Church

Church service Sunday at 11am

We're a group of different churches all together, so every Sunday is a little different. You're very welcome.

Please follow our Facebook page @ 'The Church in Great Notley' to find out the latest news and our upcoming Christmas events!

Little Waltham & Great Notley Surgeries Patient Participation Group

Autumn Update:

The surgery is pleased to announce that the new E-consult booking system is in operation and should be used for all routine appointments. The phone booking system is for urgent cases that need to be seen on that day.

Flu and Covid booster vaccinations will be held on the following Saturdays: 30th September; 7th October; 14th October; 21st October and 28th October.

You will be contacted by the surgery if you are eligible.

The new website, which we hope will be more user friendly, is in the process of development with the active involvement of the PPG in representing patient viewpoint.

If you have any concerns, questions or suggestions on issues relating to the running of the surgeries then please contact the PPG on

lw.gn.ppg@hotmail.com and we will get back to you.

Thank you!



**North Essex Astronomical Society will be at
Great Notley Discovery Centre on:**

November 18th 2023 from 7pm-9:30pm

December 16th 2023 from 7pm-9:30pm

January 20th 2024 from 7pm-9:30pm

We will have our telescopes set up for you to observe the Moon, any visible planets, and other objects of interest in the night sky. We can teach you about the constellations and how to recognise them, and answer any questions you may have about astronomy or telescopes.

The park is well signposted.

For in-car satnav purposes, the park's postcode is **CM77 7FS**

Please read this important information:

The events are free (site parking fee applies), and suitable for all ages (children must be accompanied by an adult). Donations are welcome.

We can be found in the vicinity of the main building; you may be able to see some faint red lights attached to some of the telescopes. As you come out of the carpark, turn left and follow the path towards the area which is used as the overflow car park in the summer.

Viewing will be subject to clear weather and may be curtailed or cancelled if the weather is poor.

In the event of rain, sessions will be cancelled.

If cloudy or part clear, please follow our Facebook and Twitter feeds for information as to whether the event will go ahead, or check our website **northessexastro.co.uk**

DANCE • ACT • SING

★
Rascals
Theatre School

Est. 1997



**CLASSES HELD
IN
GREAT NOTLEY,
BRAINTREE
& SURROUNDING
AREAS**



For more details tel: 01376 331543

Email: admin@rascals-uk.com

Website: www.rascals-uk.com

 www.facebook.com/RascalsTheatreSchool



**FIRST 2
HOURS
£10 EACH**



OR FIRST 10 HOURS £280

MALE/FEMALE INSTRUCTORS

01376

324448



www.mutlows.com



Get your company
noticed by 3142
residential
properties in
Great Notley

Advertise here from as little as £160 for four
editions of the Magazine in full colour

Contact the editor
editor@greatnotley.org.uk



La La La La Laaaaa...

POLICE CHOIR OPENS UP TO EVERYONE



ESSEX POLICE COMMUNITY CHOIR

Having spent 34 successful years as Essex Police Choir - which has tended to make people think that they had to be in the Force, or something to do with it, to be a member - the Choir has decided to widen its appeal to the whole community.

Essex Police Community Choir will be the new name and this coincides with some internal changes to modernise their image.

Gone will be the somewhat dated uniform for ladies who will now wear their own white tops and black skirts or trousers. Potential members will still not need to read music as the Choir rehearses pieces in a way that everyone will learn the songs quite easily. There is no audition or test for new members to pass as they will just have to be able to hold a tune.

The Choir's repertoire includes songs from the shows and other popular items and sheet music is provided at no cost.

Because they are part of the Police family, members will still have to accept that they represent the Police and therefore need to uphold the image of Essex Police and the wider service. Whilst the Choir is totally self-sufficient, not receiving any money from the Police precept, it does have very welcome support from the force, in that it rehearses at the HQ in Chelmsford and when needed, is provided with transport.

This enables subs to be kept to a minimum - £100 for 2024 or around £2 per rehearsal for the 48 weeks a year that it meets, as opposed to most commercially run choirs who charge upwards of £6 a session, or £300 a year for just school terms.

The Choir performs around 5 or 6 concerts a year for good causes, at no cost to them, and over its life it has raised in excess of £300,000 for those charities. It also believes that it has helped put more toilets in churches than any other organisation!

Choir Chairman, Tony Willson, said 'These days there are many com-

munity choirs around and potential members can choose which one they feel comfortable with. However, we feel that we are missing out on a vast range of people who probably thought that they had to be working for the police in order to join. We can now say that this just isn't so. We have thrown the doors open to anyone who wants to sing - which we all know helps our mental wellbeing. So if anyone is interested in seeing what we do, they are very welcome.'

Chief Constable and President of the Choir, BJ Harrington said "Essex Police is proud of being part of the community, so this is a great opportunity for anyone to get involved with the Choir. Being a member is an amazing way for people to enjoy singing and to get-together with like-minded people whilst giving something back to the community and raising money for good causes."

The Choir's first concert as the new Community Choir will be their Christmas event on Saturday 16th December with Essex Police Band at Christchurch, London Road, Chelmsford and details will be on the website and on social media soon.

If anyone is interested in attending a rehearsal, they should either send details via the contact form on the Choir's website (eessexpolicechoir.co.uk), via email at membership@eessexpolicechoir.co.uk or telephone Sally Low, Membership Secretary on 07966 207115 to make arrangements.

For more information please contact:

Tony Willson,
Chairman and Publicity Officer
Essex Police Choir
07939101838
enquiries@essexpolicechoir.co.uk



Art Club	Isobel Chaudry	01376552376
Badminton	Keith Hind	01376 327687
Carpet bowls	John Andrews	chairman@notleygreencarpetbowls.co.uk
White Court Dance club	Margaret Cave	07809 042964
Church in Great Notley		01376 330988
Women's Institute	Linda Pickers	07713 754414
NGCA		01376 348449
Photography club		gnpc@gmail.com
Slamseys	Ruth Wheaton	01245 361400
Scouts	Ann Quartermain	ann.quartermain@greatnotleyscouts.org
Table Tennis Club	Pauline Davis	0752 7079112
Toddler Group	NGCA	01376 348449
Workout	Brendan Cassidy	thechair@ngca.org.uk
Gardening Club	Pauline Inskipp	01376 342165
Local History Group	Mike Bardell	topbard@yahoo.co.uk
Notley Yoga	Leigh Acteson-Rook	07723 321818
Feel Good Pilates	Karen Blackburn	07515 547683
GP Surgery		01376 341411
Ducklings Pre-School	Julie Cook	01376 340432
Little Notleys pre-school	Steph Long	01376 339590
Busy Bees nursery	Melissa Harrison	07723 321818
White Court Primary School	Candida Burrell	01376 331801
Notley Green Primary Sch		01376 343485
Brownies and Rainbows		www.girlguiding.org.uk/interested
Rascals	Diane Neave	01376 331543
Walking Group	Angela Gakis	07799 068408 angela@angelagakis.com



Clerk: Elizabeth Winter
Tel: 07585232933
E-mail: greatnotleyclerk@gmail.com

Parish Councillors

Dorothy Griffin (Chairman)	7 Thatcher's Way, Great Notley, CM77 7HB cllrdgriffin@greatnotley.org.uk 01376 554990
Frankie Ricci (Vice-Chairman)	cllrfricci@greatnotley.org.uk 07850 264115
Graham Butland	cllrgbutland@greatnotley.org.uk
Barry Crawford	10 Bridge End Lane, Great Notley 07966 550507 cllrbrcrawford@greatnotley.org.uk
Tom Cunningham	07891 537669 Clrrtcunningham@greatnotley.org.uk
Tony Pritchard	cllrtpritchard@greatnotley.org.uk
Graham Sheppard	cllrgsheppard@greatnotley.org.uk
John Cogswell	cllrjcogswell@greatnotley.org.uk

District Councillors

Graham Butland, Frankie RICCI and Tom Cunningham – contact details above.

County Councillor

Graham Butland, Tom Cunningham - As Above

District Councillors

Graham BUTLAND, Frankie RICCI and Tom Cunningham - contact details above.

County Councillor

Graham BUTLAND graham.butland@essex.gov.uk

www.greatnotley.org.uk




Paul Clark Printing
LIMITED

Make a better impression

- Leaflets • Posters • Menus • Price Lists • Booklets
- Labels • Business Stationery • Business Cards
- Greetings Cards • Raffle Tickets • Invoices
- NCR Sets, Pads, Books • Plans



sales@paulclarkprint.co.uk
www.paulclarkprint.co.uk
01787 469628



Choose *home*

Personalised, private care in your home.

We can help with:

- Personal care
- Medication and transport
- Household tasks
- Companionship



Call: **03330 135 438**
Email: **info@eclcaresolutions.co.uk**
Visit: **eclcaresolutions.co.uk**

ecl care 
solutions