

GNT

Great Notley Times
58 Spring Edition



Great Notley Parish Council Magazine





LITTLE NOTLEY'S PRESCHOOL

The Church in Great Notley
phone : 07583 506054 or 01376 33950
Email : littlenotley@btinternet.com
Website: www.littlenotleyspreschool.co.uk

WHY CHOOSE US ?

We are passionate about children and giving them the best start in life and their journey to education. Our timetable of activities is creatively designed to each child's unique personal development needs. Being small and locally owned we encourage a sense of belonging within our community. Providing a safe and homely environment where your child can establish friendships that build their confidence through the shared discovery of new things. Our dedicated, qualified and experienced staff create a secure, safe and stimulating environment that encourages the children to play, explore and learn through exciting activities that children enjoy.

COME AND VISIT US

CALL NOW!

Visit our website

Visit www.littlenotleyspreschool.co.uk for more information



Serving the Great Notley community

We invite you visit us. If you would like to make an appointment to come in please give us a call. We have an open door policy so we encourage you to stop in at anytime for a visit.



Learning through play

Learning through play helps children gain social skills and thrive. We provide a range of stimulating activities enabling children to explore their physical and creative talents.

Now enrolling

Little Notley's Preschool welcomes children from two to four years of age and can accept government funded places from the age of three.

Safe and stimulating

A welcoming indoor and outdoor environment that motivates children to learn. Toys, books, equipment and facilities to keep children entertained and stimulated throughout the day.



We are at home in Great Notley



Your Local Property Specialists

Thinking of buying, selling or renting? There is only one number you need

01376 341 141

www.hamiltonpiers.co.uk 7 The Square, Great Notley, CM77 7WT
780 Associated Offices including Chelmsford and Park Lane, London W1



Great Notley TIMES

Edition	Input Deadline	Delivery
Summer	May 24th	End of June
Autumn	Sept 24th	End of Oct
Winter	Jan 24th	End of Feb

Edition 58: Spring 2024

Contents

- 4-5 News from the Chairman
- 6 Annual Parish Meeting
- 8-10 WINGS - WI Notley Green
- 13 Great Notley Primary School
- 14-15 Photography Club
- 16 Male Voice Choir
- 17 Social Badminton
- 18 Carpet Bowls

- 20-21 Notley Green Community Association
- 22 Great Notley WI
- 23 Wiggle Church
- 24 Public Stargazing
- 26 Parish Contacts
- 27 Parish Councillors

**Uniting the Parish areas of: Cut Hedge - London Road -
Notley Green - Oaklands Manor - Panners Farm -
Slamseys Farm - White Court**

Cover image - Taken by a member of the Great Notley Photography Club. Contact details inside.

**Local articles of interest, residents views and comments are always
welcome and should be sent to the Editor.
email: editor@greatnotley.org.uk**

Great Notley TIMES

Whilst Great Notley Times is supported by the Great Notley Parish Council, the views expressed within it are not necessarily those of the Council



**Annual Report of the Chairman 2023-2024**

From the Chairman I am writing this in mid-January after what turned out to be a very wet and rather cold start to the year but today the sun is shining and I have to say it does lift the spirits. The excitement of family reunions and all the celebrations at Christmas are receding in our minds as we look forward to the New Year and the joys of spring.

At Christmas the Parish celebrated on the Green, and afterwards in the Notley Green Community Association Hall. Most of the hard work was done by those wonderful ladies of Wings (the WI of Notley Green), who organised most of it helped by the Parish Clerk in particular. They decorated our tree and prepared the hall for refreshments afterwards, which included an array of cakes and other light snacks. We were fortunate to have the Scouts cooking hot food available from their barbecue, and the Bocking Concert Band guiding us through the singing, sheltered by an awning provided by those same, ever helpful Scouts.

Thanks, must also go to the Reverend Rachel, who led the prayers, and of course to Father Christmas (Fred Illman), who delighted the Children by presenting them with gifts donated by the Prince Louis and chocolates provided by the Parish Council. Further entertainment, for Children, was provided by way of Christmas crafts, led by our Clerk, Liz Winter and kindly assisted by Wings members. There was also a cake stall and crafts for adults also provided by members of Wings. This all added to a wonderful evening, full of Community spirit and cheer.

There are many people I have not space to mention who helped to provide this free event including the Parish Council who provided the funds needed for refreshments, other supplies and the hire of the hall. My thanks, go to them all.

The Remembrance Day event went ahead as planned and thanks also go to those involved. We have much more safe space to use on the green so I urge you all to come to this event to strengthen our community spirit by giving thanks together to all those who have, and will still keep us safe.

As ever, we are plagued by noisy road users and those ubiquitous potholes, but rest assured we are not letting things lie. We have had visits from the Police to speak to local residents about their concerns concerning speed meets and illegal racing and to explain the actions being taken. Councillor Butland has asked for help in identifying potholes in the road and has reported these to Essex County Council.

Representatives from the Marshgate group came to speak to the Council and local residents about Phase 2 of the Horizon project. They spoke about career opportunities for the local residents as quality employers will be attracted to the site, and new walks for local residents as public rights of way are developed on the site. They did not expect the housing market to be adversely impacted on, nor a significant increase in the amount of traffic. The new phase will be comparable in size to the existing phase 1, as well as being low-carb and fully sustainable. Concerns were raised

by members of the public relating to recent attempts to sell several roadways in the village via auction but sales were withdrawn. It seems that the roadways are not commercially viable and not likely to cause much interest. Nevertheless, Councillor Butland offered to investigate them with Essex highways.

People seem to be making great use of the Braintree scooter scheme but are not yet good at leaving their scooters safely for collection. I know this causes concern, but I'm hoping it is a learning curve and things will improve. The scooters do have a little, foldable stand underneath for the safe storing of them once used and they can be stood, safely to one side, by using those stands.

It seems there are to be changes to the parking system at Great Notley Country Park. The parking system is expected to change from pay on departure to pay and display. The situation will be monitored by Braintree District Council as and when the parking changes are introduced. The new machines will be set up to take contactless and app payments. As yet, we have no other details. And now a note on finances.

We approved our Budget in December 2023, which will see a slight increase to the Band D calculation, set to increase by £2.13 to £44.70 per Band D household in Great Notley (others will vary accordingly) – this represents a 5% increase on last year.

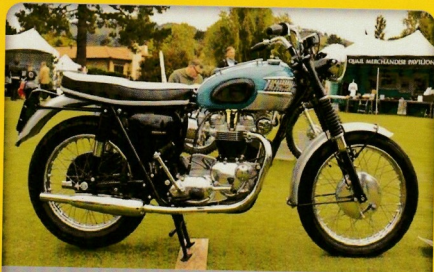
And lastly, the Annual Parish Meeting will be held on 4th March this year at 7.30pm at the Community Centre. This is a meeting for the Electors and is a good opportunity for you all to come along to meet your Councillors and ask any questions you may have. Some light refreshments will be provided and we hope to have some Community Groups with us as well. I hope some of you will come to see us. Our Parish Council meeting will follow the Annual Parish Meeting.

Dorothy Griffin

Annual Parish Meeting 4th March 2024

7.30pm, Committee Room - Great Notley Community Centre

Meeting for the Residents and Community Groups to meet with Councillors, to discuss any pertinent matters. Refreshments will be provided. Full Parish Council meeting will follow at 8pm.



ESSEX MOTORCYCLE BUYERS

We buy all Motorcycles, Mopeds
Scooters, British Motorcycles,
Barn Finds or Parts

LOOK IN YOUR SHEDS, GARAGES, GARDENS

Boxes of Parts Wanted

Call Darren : 07775 998628



Britannia W Harris & Moovit SelfSTORE

24HR Secure Self Storage

&

Secure Shredding Services

01376 326946

07808 634979

tom@wharrisremovals.co.uk

MOVERS-SHIPPERS-STORERS

VAN HIRE – CAR STORAGE

'Braintree's original Family Owned
moving & storage company since 1968'



Britannia
W. Harris & Moovit

>>> Could YOU be a Blood Runner? <<<



↓ See our article ↓

EssexVoluntaryBloodService.com

digi go

on demand



DigiGo - Travel on demand

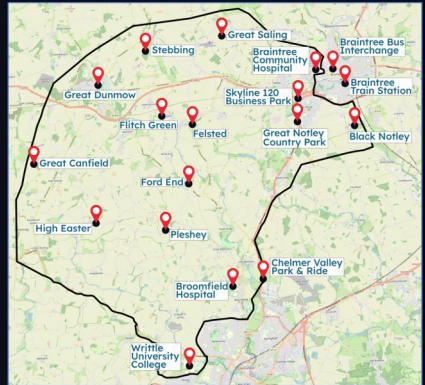
DigiGo is a form of shared public transport that has no fixed route or timetable - travel freely anywhere within the operational area

- The service can be booked on-demand (within 15-20 minutes) or up to 7 days in advance
- All our single fares are capped at £2 until 31 October 2023 and then £2.50 until November 2024
- DigiGo operates 7 days a week, from 7am until 10pm, excluding Bank Holidays

Visit www.digigo.uk for more information



Book, Track, Ride
via the **TravelEssex** app



How do I book?

Scan here to download the **TravelEssex** app and book a DigiGo journey



Alternatively, we have a telephone booking option for those unable to use the app 03330 137 138., available Monday to Friday, 10am till 12pm (excluding bank holidays)



(Women's Institute) Notley Green

Wings were extremely busy with community events towards end of 2023.



November had begun with our preparations for the festive season with a tutorial evening of making a Christmas Candle Table Decoration. We not only, as our tradition decorated the Village Sign, rock and Jubilee Oak on



the Green for Remembrance, but participated in the Christmas Tree Festival. Our tree had been made up of knitted, crocheted or donated hats from our members with colourful pom poms.



In January these hats were given to the Braintree food bank for distribution and inclusion in their food parcels.

We played a major part in the organisation of the Christmas Carol and Craft Event alongside other community groups. This was a lovely festive event put on for families in our local community. Christmas Carols accompanied by Bocking Brass Band were played and sung around the Christmas Tree on the Green decorated by us. Wings facilitated the refreshments in the hall provided by Great Notley PC, with a member demonstrating felted poinsettia decorations alongside an exhibit of

WI crafts and publicity stand including our Christmas Tree entry. Children's crafts were available also provided by our Parish Council and hot food cooked by the Scouts.

Our members December meeting was a social meeting with food, games and laughter! At the beginning of January members had their annual visit to the Mercury Theatre in Colchester for the pantomime of Sleeping Beauty. Another evening of fun and laughter. January's meeting was all about Essex Wildlife photography with Liz Huxley as our speaker.



A competition for members – Your favourite wildlife photograph you have taken. February is the National WI Campaign for Climate Change with “Show the Love” where members made small hearts either knitted, crocheted or scraps of fabric to make a display for the Village Sign.

Our Book Club has also been meeting regularly with fun evenings talking about the book they have read with chat and laughs!



Our programme of speakers/demonstrators for the next few months are:-

- 21st March – Introduction to Mindfulness Session – Caroline Minor
- 18th April – The Essex Witch Trials – John Worland
- 16th May – AGM with Cheese and Wine Evening
- 20th June – Boudica – Richard Bale

Any non-member can attend a meeting as a guest and will be welcomed. So please do come along if you feel this is of interest to you.

We also have subgroups, a Book Club, Craft Club, Film Club, Gardening Group, Knit and Natter as well as outings for walking, cinema and theatre trips.

Meetings are held on the third Thursday of the month at the Notley Green Community Centre Hall from 7.45 to 10pm including some social time, speaker or activity, a chance to meet old friends and make new ones. We really look forward to seeing you soon at one or visit us at a community event.

For more information contact: joinourwi@gmail.com

Visit us on Facebook:

<https://www.facebook.com/womensinstitutenotleygreen/>



Great Notley TIMES

GP Update



Update

GP surgery Patient Participation Group

The Great Notley surgery wishes to let you know about its Patient Participation Group.

The aim of the group is to work with their practice to provide practical support, to help patients take more responsibility for their own health and to provide strategic input and advice. PPGs are based on cooperation between the practice staff and patients.

In particular the Group issues a regular newsletter which contains lots of useful information about the practice and managing your health and the group would particularly like patients to know how to obtain a copy.

You can download a copy at www.littlewalthamsurgery.co.uk/patient-participation-group and click on 'newsletter' on the left-hand side of the screen.

Scouts

1st Great Notley

Scout and about!



We hope you made it to the village Christmas event! The BBQ went well, raising funds to enable more Scouts to attend an International Jamboree event. The BBQ is planned to be back at the Fete in July if you missed out on the opportunity this time.

Christmas Carols & Crafts 2023

Our Sections:

Squirrels

Squirrel Scout Drey
4 – 6 years

BEAVERS

Beaver Scout Colony
6 – 8 years

cubs

Cub Scout Pack
8 – 10 ½ years

SCOUTS

Scout Troop
10 ½ – 14 years

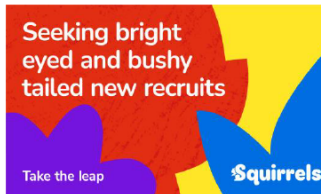
New Squirrel Scout Drey

In October we opened our first Squirrel Drey for 4 and 5 year-olds. This is an exciting new development for our Scout Group and is only the second Squirrel Drey to open in the Braintree District.

In January we welcomed more new Squirrels – they have all been out and about, visiting a farm, attending their first Remembrance event and learning about the world around them. They have been making things, listening to stories and singing songs.

If your young person would like to join the fun, in Squirrels, Beavers, Cubs or Scouts, please contact our waiting list manager:



Beth.Smith@greatnotleyscouts.org



scouts.org.uk/join

[#SkillsForLife](https://twitter.com/SkillsForLife)

Copyright 2018 The Scout Association

 1st Great Notley Scout Group
 @UKScouting

... and the fun isn't just for young people:



Stepping into their shoes starts on a Wednesday night

scouts.org.uk/join
[#SkillsForLife](https://twitter.com/SkillsForLife)

Week by week, our volunteers empower thousands of young people to try new things, make new friends and stand on their own two feet.

You don't need to be Bear Grylls to join us. You don't need to have been a Scout when you were younger. You don't even need to know how to put up a tent.

Whatever your skillset, lend a hand for as little or as much time as you can spare, and we promise you'll get more out than you put in.

We provide the training. You show up, get stuck in, and make new memories for life. Sounds fun? Worthwhile? It is.



Robots & BeeBots



Notley Green Primary School

"Everybody in this country should learn how to program a computer because it teaches you how to think" Steve Jobs

At Notley Green, we have heavily invested in our computer technology over the last year. We have lots of iPads, Chromebooks and even programmable robots called BeeBots for everyone to use.



We love working on the iPads. Here are some pictures of us working on our Phonics program.

We love our computing lessons! We learn all about programming, designing, coding and how to create word documents, presentations or spreadsheets. Learning all of these skills are to help us in our futures.



Here are some pictures of us taking photos of our Dinosaurs! We are moving them into different positions to tell a story.

We know how important it is to stay safe online and we learn lots about it! We have assemblies, computing lessons and PSHE lessons about different aspects of online use. We celebrate Safer Internet Day every year in February.



Look at our beautiful learning!

Get your company noticed by over 2000 residential properties in Great Notley

Advertise here in **FULL COLOUR** from as little as £40 for four editions of the Magazine

Contact the editor
editor@greatnotley.org.uk



Great Notley Photography Club has had a busy start to the 2023/24 Season with 3 rounds of our digital league competition, a print 'five of a kind' competition, our Christmas social, a variety of speakers and trips out.

As last year our club members were the official photographers for Cressing Temple Barns' Apple Day in October (pic 1 below) where we had an exhibition showcasing members' photos as well as taking photos of the event. The event was very well attended with excellent weather.



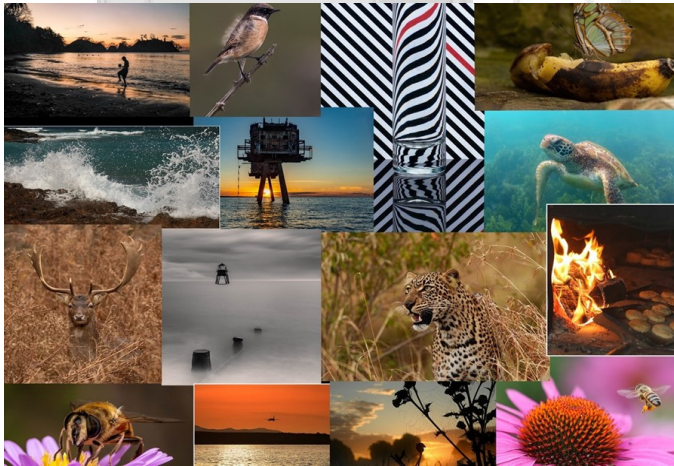
One of our photo walkabouts was to Epping Forest to capture Autumn colours (pic 2 and 3 above). We have more outings planned for the coming months such as photographing bluebells, the village of Thaxted and also Sudbury Meadows.

We are all excited to have Justin Minns coming along on Thursday 13th June to give us his talk 'A Learning Curve'. Justin is an award-winning professional landscape photographer, best known for atmospheric images of East Anglia. Visitors are welcome on the night (tickets are just £5 for non-club members – cash or card payable at the door).

Great Notley Photography Club is a friendly club and we pride ourselves on the variety of programme including workshops, competitions, external and club speakers, photography outings etc. Our approach has always been to encourage members to get out and use their cameras from the simplest mobile phone to the most complex DSLR. As they say, the best camera is the one that you have with you - better to get the shot than no shot at all.

The club welcomes new members of all standards - all we ask is that you are keen to learn, share and develop your skills in photography. We would be pleased to see new/prospective members at any of our meetings.

If you are interested in coming along, we hold meetings on alternate Thursdays at The Church Hall, Great Notley.



Details can be found on our website www.gnpc.co.uk or email gnpc.photo@gmail.com for details.



Singing is good for you

Are you male? Do you enjoy singing?

Why not join the Braintree Male Voice Choir?

Singing is good for you (doctors have proved that) and singing together even better (psychologists have shown that).

[The choir sing a variety of songs from](#) classics such as Nessun Dorma and Morte Christe through Bring Him Home, Sweet Caroline, Ed Sheeran's Perfect and The Wellerman.

Rehearsals are for two hours in Braintree on Wednesday evenings, at St Peter's Church Hall, St Peter's in the Fields, Braintree CM7 9AR at 7.30 pm.

Do I have to be able to read music? **No**

Do I have to have an audition? **No**

Will I have to sing alone? **No.**

So what's stopping you?

For further details, contact choir secretary Ron Fosker on 01376 512582 or rfofker@btinternet.com

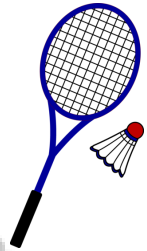


Update



If you enjoy social badminton then please call in any Tuesday between 1.30pm and 3.30pm at the Notley Green Community Hall and join us for a FREE taster session. There is a small session fee on subsequent occasions.

It doesn't matter what standard you are or whether you have never played before. We are a friendly bunch, so just drop in and give it a try. We can supply a racquet, but please wear trainers with non-marking soles.



Contact Keith on 01376 327687 or just turn up!

The Electrical Man

Clive Coleman

Your local electrician

Free estimates and advice

Reliable Quality work

Reasonable Prices

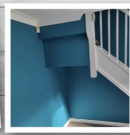
Any job welcome large or small, rewires,

fault finding, security lighting

NICEIC/Part P Registered

Telephone: 07860 599427

clivercoleman@aol.com



True Colours

Keith Sculfor

PAINTING & DECORATING SERVICES

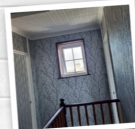
Interior/Exterior decorating service with over 25 years' experience.

- Wallpapering • Split colour walls
- Exterior work • Interior work

For more info, please give me a call:

07540 740809

keithsculfor@btinternet.com





Notley Green Carpet Bowls Club

A new year and after a mixed set of results so far the Club is sitting in a challenging position in the Essex East Carpet Bowls League Competition with high hopes to be in contention for the title when the final games are played in the next couple of months.

Last year ended with two club events, the Fish/Chicken and Chips Quiz night, with the questions once again compiled by Tony Day, the Club Secretary, who on the night, was ably assisted by his wife Joan keeping the scores.

It was a very successful evening with the final winning team only decided on the last round of questions.

The second event was the pre-Christmas nibbles and Club Competition finals. Those members and friends who attended were treated to three excellent matches with some great bowling.

In the Ladies Singles Sandy Pattenden defeated Wendy Grieve to lift the Ladies Shield, whilst in the Mens Singles Richard Pound became the member to win the title more times than any other when he was victorious against Michael Wetton.

In the Pairs Final Richard Pound and Michael Wetton, the Singles Finalists, joined forces to overcome the team of Chris Dayer and Joseph Hull. Congratulations to all the winners. The Club continues to thrive with a number of new members joining in the past year. As always anyone wishing to come along and try their hand will be made more than welcome. No equipment needed and if you have never played before there is always plenty of people to show you how to bowl. The Club sessions now take place on a Monday and Thursday afternoon from 1.30pm to 4.00pm with a break for complimentary tea/coffee and biscuits.

Best wishes for 2024

John Andrews

Daniel Robinson & Sons

Your local

Independent Family Funeral Directors

Est. 1892

Contemporary and traditional funeral services, as unique as the loved one remembered.

Our friendly team are located in Manor Street, in central Braintree, we offer our services to families, with compassion, professionalism and the greatest care.

24 hour service, every day

Memorial Masonry

Prepaid Funeral Plans & Funeral Wishes

For more information, please contact us:

7 Manor Street, Braintree, CM7 3HW

www.drobinson.co.uk

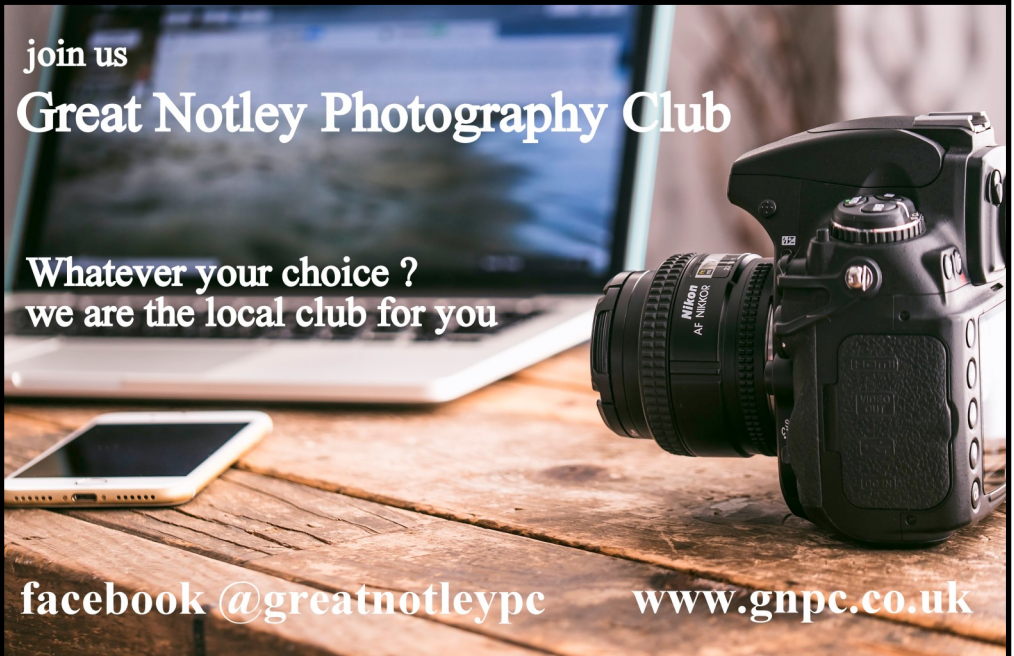
Enquiries@drobinson.co.uk Tel: 01376 320582



join us

Great Notley Photography Club

Whatever your choice ?
we are the local club for you



facebook @greatnotleypc

www.gnpc.co.uk



**NOTLEY GREEN
COMMUNITY ASSOCIATION**
Registered Charity No 1058443
NGCA Treasurer

Do you have an accountancy background and willing to support a local, charitable community group? If so we need you!

We have a vacancy for Treasurer of the Notley Green Community Association (NGCA), a role that must be filled for us to remain open. The NGCA is a charitable organisation responsible for the running of the Village Hall in Great Notley.

This is a voluntary role and the ideal candidate will be able to donate a couple of ad hoc hours a week.

Roles and responsibilities include:

- General financial over-sight
- Financial planning and cash-flow management
- Maintenance of financial records
- Preparation of annual financial statements
- Attendance at quarterly committee meetings

Please contact Nicky Parkinson, via the ‘Contact Us’ tab on our website www.ngca.org.uk for more information.

Centre, Notley Green, Great Notley,
BRAINTREE, Essex CM77 7US
Tel: 01376-348449 Web: ngca.org.uk Email:
nicky@ngca.org.uk



**NOTLEY GREEN
COMMUNITY ASSOCIATION**

Registered Charity No 1058443

NGCA Chair

An exciting opportunity has arisen for the role of Chair of the Notley Green Community Association (NGCA).

The NGCA is a charitable organisation responsible for the running of the Village Hall in Great Notley.

Roles and responsibilities include:

- Work with the hall manager and committee members to deliver the annual maintenance plan
- Help to plan and organise fundraising events to ensure the organisation remains financially stable
- Lead 4 committee meetings a year to discuss progress and ensure the smooth running of the organisation

The ideal candidate will be able to donate a few ad hoc hours a week to the role.

This is a voluntary role and a great chance to be part of this thriving local community group.

Please contact Nicky Parkinson, via the 'Contact Us' tab on our website www.ngca.org.uk for more information.

Community Centre, Notley Green, Great Notley,
BRAINTREE, Essex CM77 7US

Tel: 01376-348449 Web: ngca.org.uk Email: nicky@ngca.org.uk



Ho De Ho...

Since last report we have been entertained by David Webb, a former Yellow Coat in Hi De Hi. He told us so many funny things that happened on set. A thoroughly entertaining morning. In July we had a talk by a representative of Essex Air Ambulance, a vital part of the emergency services. For a change we didn't go out for our annual outing we decided to help the carbon footprint and had a picnic on the green. We spent a convivial morning chatting and eating our picnics. Luckily the weather was kind to us. In September we welcomed back Amanda Sutherland. This time her talk was on "make do, mend, restyle and recreate your clothes". We had "Turkish Delights!" in October and some of the members did some belly dancing. The old hips were certainly gyrating!. We went crafty in November where we decorated a bottle and then put lights inside. It was surprising the different ideas everyone had. Everyone enjoyed a Christmas meal at Little Channels and we also had a social morning with a quiz and "Whats in Your Handbag". You scored points if you had a certain item in your handbag. It's amazing what we ladies carry around with us.! So into the new year. We began with a talk by Siobhan Pierce on Clown to Corporate. She gave us an entertaining talk on how she became a clown and how it helped her when she entered the corporate world. We have some interesting and varied talks lined up for the year. Come and give us a look. New members are always welcome.

We meet at 10.00 on the first Monday of the month (unless a Bank Holiday).





Would you like to attend church as a family but worry that your children are too wiggly? Worry no more!

We are starting **Wiggle Church** on the 28th April at the Church in Great Notley at 9.30am.

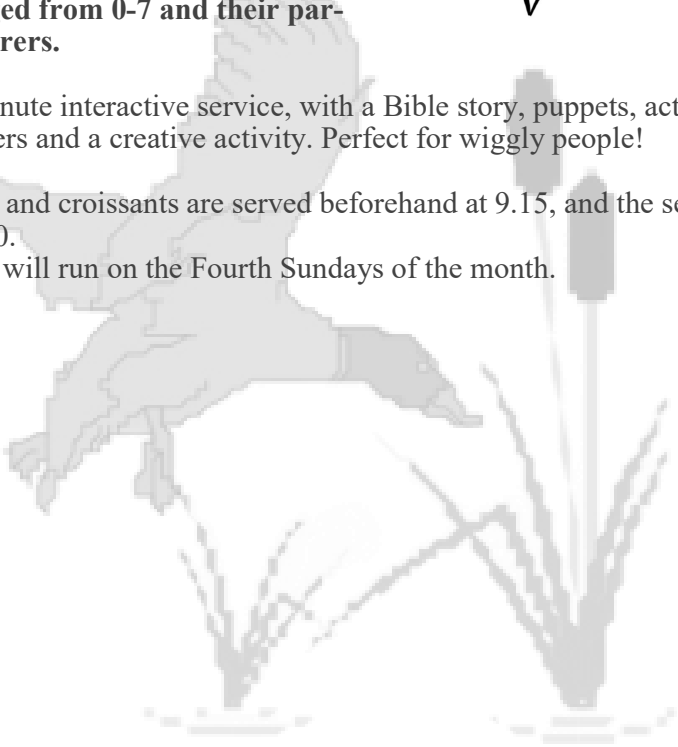


Wiggle Church is for families, with children aged from 0-7 and their parents and carers.

It is a 30 minute interactive service, with a Bible story, puppets, action songs, prayers and a creative activity. Perfect for wiggly people!

Tea, coffee, and croissants are served beforehand at 9.15, and the service starts at 9.30.

The service will run on the Fourth Sundays of the month.





**North Essex Astronomical Society will be at
Great Notley Discovery Centre on:**

March 16th from 7pm-9:30pm

We will have our telescopes set up for you to observe the Moon, any visible planets, and other objects of interest in the night sky. We can teach you about the constellations and how to recognise them, and answer any questions you may have about astronomy or telescopes.

The park is well signposted.

For in-car satnav purposes, the park's postcode is **CM77 7FS**

Please read this important information:

The events are free (site parking fee applies), and suitable for all ages (children must be accompanied by an adult). Donations are welcome.

We can be found in the vicinity of the main building; you may be able to see some faint red lights attached to some of the telescopes. As you come out of the carpark, turn left and follow the path towards the area which is used as the overflow car park in the summer.

Viewing will be subject to clear weather and may be curtailed or cancelled if the weather is poor.

In the event of rain, sessions will be cancelled.

If cloudy or part clear, please follow our Facebook and Twitter feeds for information as to whether the event will go ahead, or check our website **northessexastro.co.uk**

DANCE • ACT • SING

Rascals

Theatre School

Est. 1997



**CLASSES HELD
IN
GREAT NOTLEY,
BRAINTREE
& SURROUNDING
AREAS**



For more details tel: 01376 331543

Email: admin@rascals-uk.com

Website: www.rascals-uk.com

www.facebook.com/RascalsTheatreSchool



**FIRST 2
HOURS
£10 EACH**



OR FIRST 10 HOURS £280

MALE/FEMALE INSTRUCTORS

01376

324448



www.mutlows.com



JOSCELYNE CHASE

Commercial property department

01376 322222

Serviced office
with flexible
license periods

Available
from January
2024

**12 serviced
first floor offices
to let**

Sizes ranging
from 258 sq ft up
to 500 sq ft



WESTDRIVE
SPACE



Art Club	Isobel Chaudry	01376552376
Badminton	Keith Hind	01376 327687
Carpet bowls	John Andrews	chairman@notleygreencarpetsbowls.co.uk
White Court Dance club	Margaret Cave	07809 042964
Church in Great Notley		01376 330988
Women's Institute	Linda Pickers	07713 754414
NGCA		01376 348449
Photography club		gnpc@gmail.com
Slamseys	Ruth Wheaton	01245 361400
Scouts	Ann Quartermain	ann.quartermain@greatnotleyscouts.org
Table Tennis Club	Pauline Davis	0752 7079112
Toddler Group	NGCA	01376 348449
Workout	Brendan Cassidy	thechair@ngca.org.uk
Gardening Club	Pauline Inskipp	01376 342165
Great Notley WI	Diane Ashdown	07510 296627 diane.ashdown@sky.com
Notley Yoga	Leigh Acteson-Rook	07723 321818
Feel Good Pilates	Karen Blackburn	07515 547683
GP Surgery		01376 341411
Ducklings Pre-School	Julie Cook	01376 340432
Little Notleys pre-school	Steph Long	01376 339590
Busy Bees nursery	Melissa Harrison	07723 321818
White Court Primary School	Candida Burrell	01376 331801
Notley Green Primary Sch		01376 343485
Brownies and Rainbows		www.girlguiding.org.uk/interested
Rascals	Diane Neave	01376 331543
Walking Group	Angela Gakis	07799 068408 angela@angelagakis.com



Clerk: Elizabeth Winter
Tel: 07585232933
E-mail: greatnotleyclerk@gmail.com

Parish Councillors

Dorothy Griffin
(Chairman) 7 Thatcher's Way, Great Notley, CM77 7HB
cllrdgriffin@greatnotley.org.uk
01376 554990

Frankie Ricci
(Vice-Chairman) cllrfricci@greatnotley.org.uk
07850 264115

Graham Butland cllrgbutland@greatnotley.org.uk

Barry Crawford 10 Bridge End Lane, Great Notley
07966 550507
cllrbrcrawford@greatnotley.org.uk

Tom Cunningham 07891 537669
Clldruncunningham@greatnotley.org.uk

Tony Pritchard cllrrpritchard@greatnotley.org.uk

Graham Sheppard cllrgsheppard@greatnotley.org.uk

John Cogswell cllrtcogswell@greatnotley.org.uk

District Councillors

Graham Butland, Frankie RICCI and Tom Cunningham – contact details above.

County Councillor

Graham Butland, Tom Cunningham - As Above

District Councillors

Graham BUTLAND, Frankie RICCI and Tom Cunningham - contact details above.

County Councillor

Graham BUTLAND graham.butland@essex.gov.uk

www.greatnotley.org.uk



Make a better impression

- Leaflets • Posters • Menus • Price Lists • Booklets
- Labels • Business Stationery • Business Cards
- Greetings Cards • Raffle Tickets • Invoices
- NCR Sets, Pads, Books • Plans



sales@paulclarkprint.co.uk
www.paulclarkprint.co.uk
01787 469628



Putting the **GREAT**
into NOTLEY

SATURDAY 13 JULY 1PM-9PM

Save The Date!!
Saturday 13th July
Great Notley Village Fete
Held on the village green.
Please follow our Facebook page
'Great Notley Village Fete'
for all updates and information.